

# PCRANCH

## Version 2008

### Contact Info:

Software Support and Distribution  
Department of Animal Science  
University of California  
1 Shields Ave  
Davis, CA 95616, USA

Phone: (530) 752-1278

Fax: (530) 752-0175

Email: [software@asmail.ucdavis.edu](mailto:software@asmail.ucdavis.edu)

Web Address: <http://animalscience.ucdavis.edu/extension/software/pcranch/>

To install PcRanch program, you must have Administration privilege.

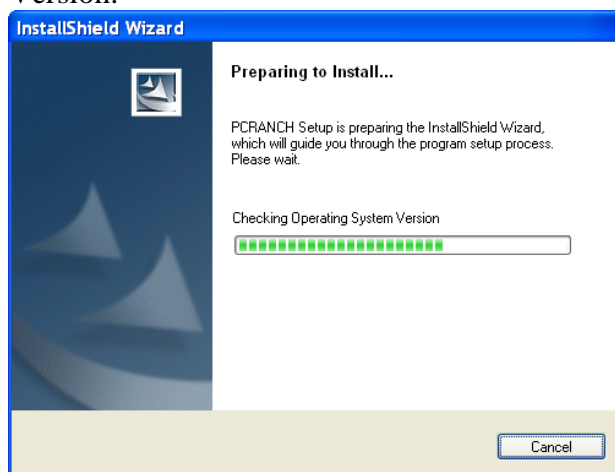
### How to Install?

1. Insert the PcRanch CD into the CD-Rom drive.
2. Using your Windows Explore, navigate to the CD. You will see a file called Setup.exe:

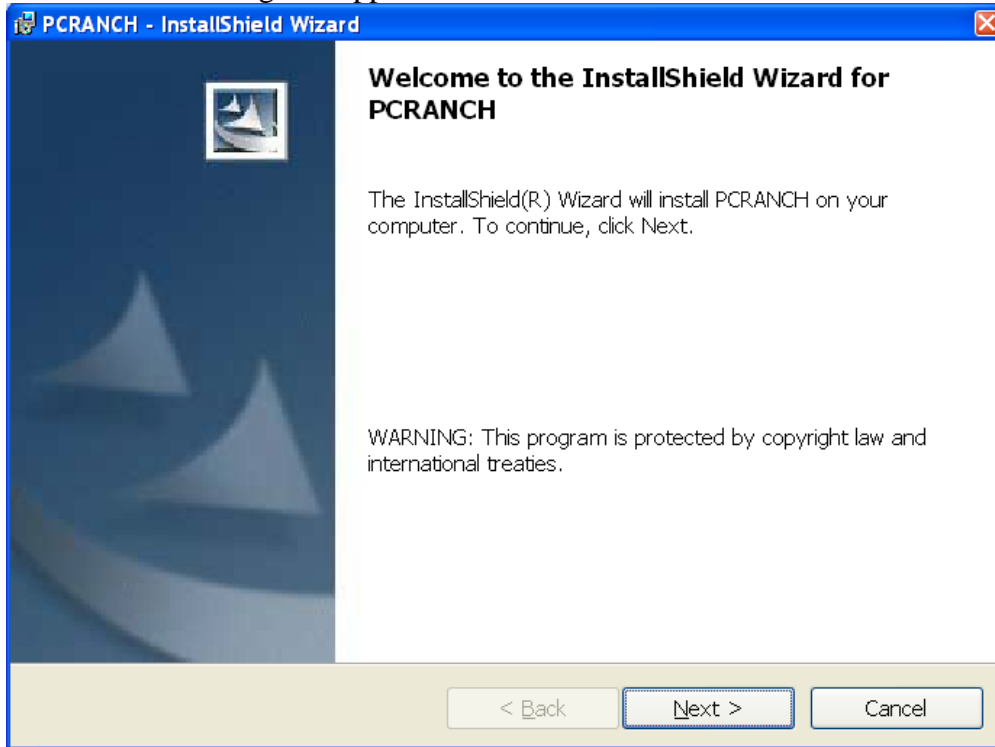


Setup.exe

3. Double click Setup.exe. A dialog box appears, checking Operating System Version.

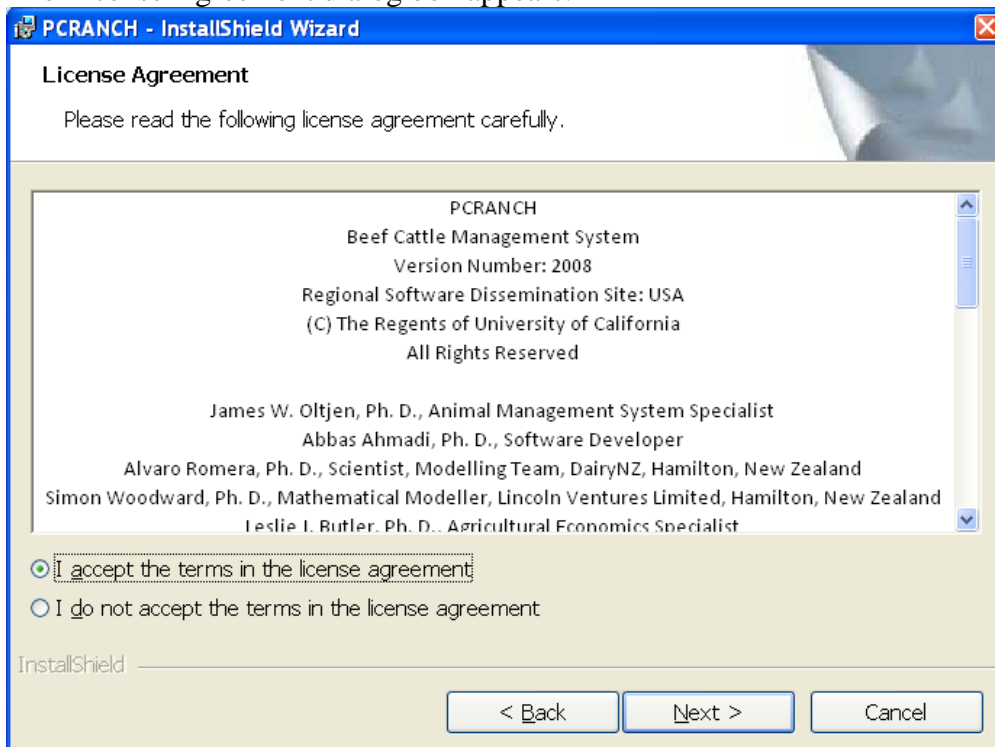


4. The Welcome dialog box appears:



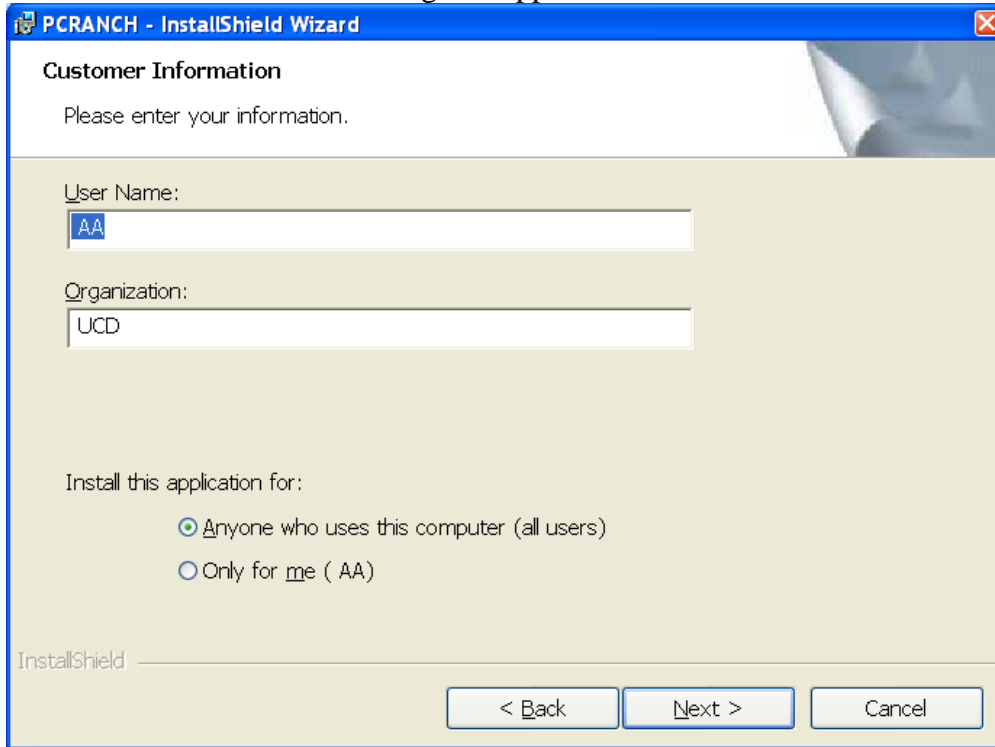
Click the Next button.

5. The License Agreement dialog box appears:



Accept the terms in the license agreement and click the Next button.

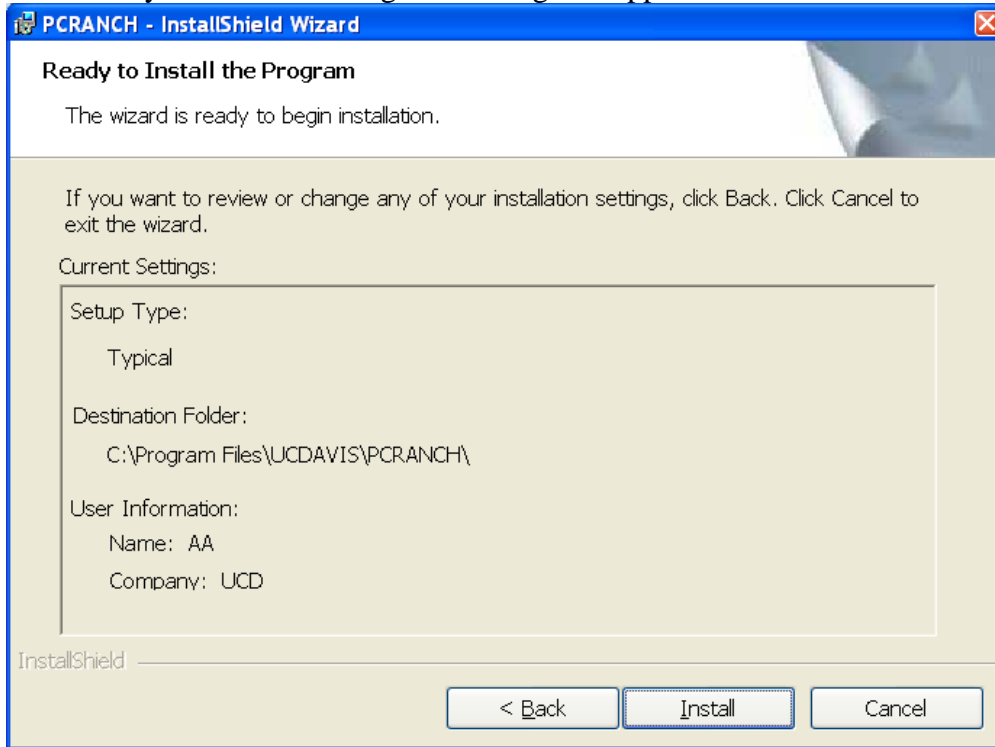
6. The Customer Information dialog box appears:



The screenshot shows a Windows-style dialog box titled "PCRANCH - InstallShield Wizard". The main heading is "Customer Information" with the instruction "Please enter your information." Below this, there are two text input fields: "User Name:" containing "AA" and "Organization:" containing "UCD". Underneath, there is a section "Install this application for:" with two radio button options: "Anyone who uses this computer (all users)" (which is selected) and "Only for me ( AA)". At the bottom left, it says "InstallShield". At the bottom right, there are three buttons: "< Back", "Next >", and "Cancel".

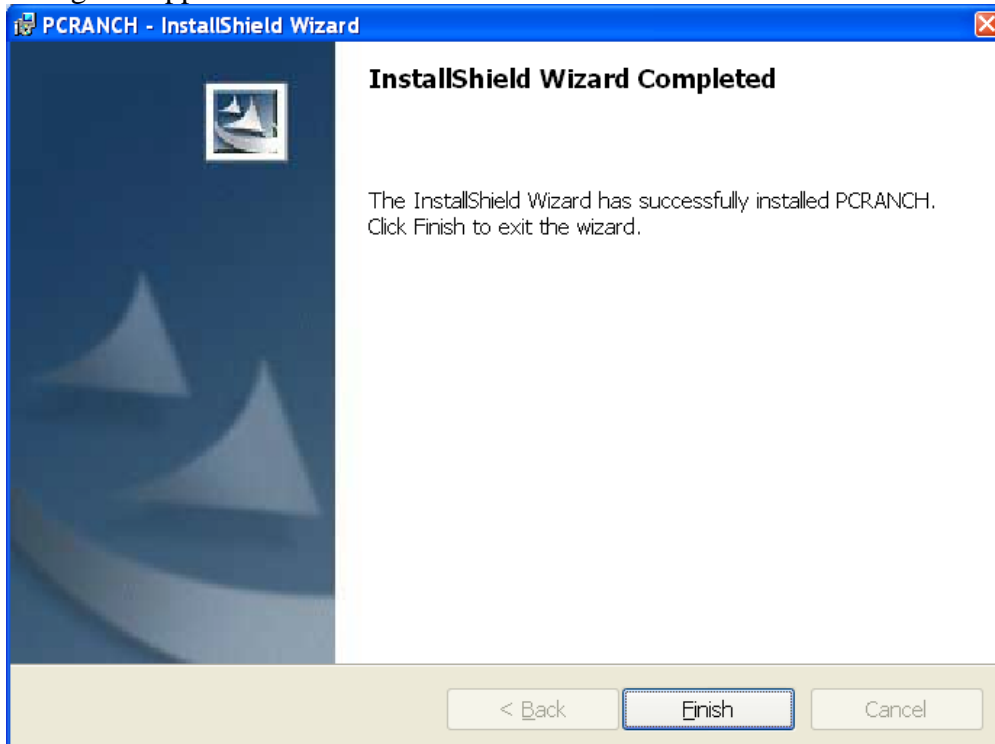
Enter your User name and your organization and click the Next button.

7. The “Ready to Install the Program” dialog box appears:



Click the Install button.

8. The wizard will install the PcRanch program on your computer and the final dialog box appears:



Click the Finish button. The wizard finishes the installation and will launch the PcRanch program.

9. The wizard will place a shortcut to PcRanch on your desktop. It also adds the PcRanch to your program menu.
10. It will create a folder called “**C:\Program Files\UCDavis\PcRanch\**” and will place the **PcRanch.exe** file in that folder

---

---

## ***Description***

PCRANCH is a ranch modeling environment. It allows the user to design, specify and simulate cow-calf ranching systems over long periods of time with daily weather data. The performance of alternative ranch systems can then be compared.

PCRANCH is designed to compare the level and variability of ranch performance under alternative management strategies over the long term. For example, we might compare spring vs. autumn calving systems. We might do this by simulating these systems over a 30 year period. We might replicate this 20 times (using 20 different randomly generated weather patterns). We might compare the average and variation of annual gross margin from live weight sold between the systems (as well as other performance measures).

## ***PcRanch folder***

All PcRanch files are stored in the following folder:  
**C:\Program Files\UCDavis\PcRanch\**

## ***Data Files***

All PcRanch ration files have the .PCR extension and are stored by default in the above folder. Example: \_lastone.pcr and \_test.pcr

## ***Weather Files***

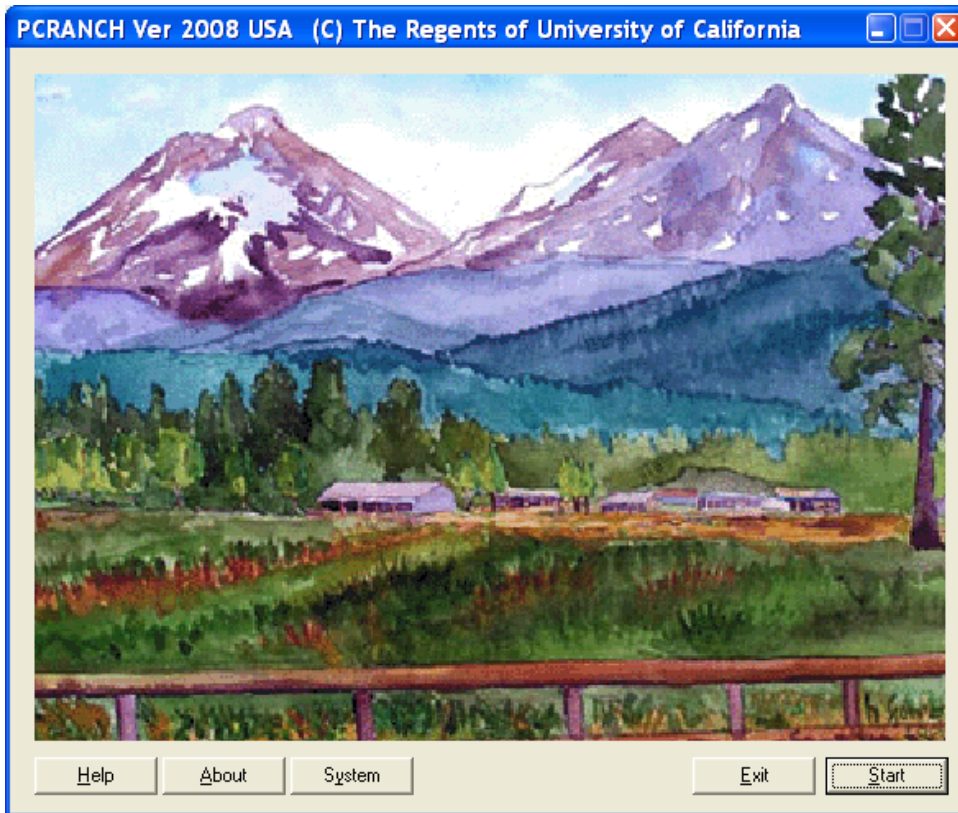
All weather files have .CSV extension and are stored in the following folder:  
**C:\Program Files\UCDavis\PcRanch\W\**

Example:

PCR\_Central\_Coast\_Valleys\_198\_Santa\_Paula\_04\_14\_2005\_TO\_12\_19\_2007.csv

## How to Run?

1. Click the Start button and then choose the “All Programs”. A menu list appears.
2. Choose the “UCDavis”, and then the “PCRANCH”, and finally the “Launch PCRACH” option. The main window of PcRanch appears.



3. The first step is to enter Ranch information such as Area, Altitude, Herbage Mass, Green Fraction, etc.
4. The Second step is to enter Herd information such as number of Replacement Heifers, Bred Replacement Heifers, Second Calf Heifers, and Cows.
5. The Third step is to enter Weather information such as Starting Date, Ending Date and type of weather data (Actual, Average, Random).
6. The fourth step is to enter Parameters information.

After you have entered your information, then you can run the simulation and view the outputs.

To create a new file, or to open and print an existing file, click on the Files button on any of the four screens (Ranch, Herd, Weather, and Parameters).

## How to Report Bugs?

Whenever you encounter a bug in the program, please follow these steps:

1. Take a snap shot from your screen. To take a snap shot, hold down the **Alt** key. Hold down the **Alt key** and press the **Print Scrn** key. A snap shot of the screen will be saved in the memory of your computer.
2. Open a Word document and use Edit and Paste command to paste the snap shot of the screen from the memory to your document.
3. Add a description for this bug under the pasted picture.
4. You may want to add more snap shots of input screens to this document. A picture worth thousands words. So it is more helpful to have screen snap shots for debugging the program.
5. Save your document as YourName\_Bug01.doc, for example, **DanDrake\_Bug01.doc**.
6. Email your document as an attachment to:  
[software@asmail.ucdavis.edu](mailto:software@asmail.ucdavis.edu)
7. Please use a separate word document for each bug.