

PEGASUS
Least Cost and Ration Analysis Programs
for Horses
Version Number 2007
Regional Software Dissemination Site: USA

(C) 1989-2007 The Regents of the University of California
All Rights Reserved

Peter H Robinson, Ph.D., Dairy Nutrition and Management Specialist
John R. Dunbar, Livestock Nutrition Specialist, Emeritus
Abbas Ahmadi, Ph.D., Software Developer
Department of Animal Science,
University of California
Davis, CA 95616 USA

The Regents of the University of California make no representation or warranties with respect to the contents hereof and specifically disclaim any implied warranties of merchantability or fitness for any particular purpose. Further, the Regents of the University of California reserve the right to revise this software and/or documentation and to make changes from time to time in the content hereof without obligation of the Regents of the University of California to notify any person of such revision or change.

Contact information:
Extension Software Support
Department of Animal Science
University of California
Davis, CA 95616, USA
Phone: (530) 752-1278
Fax: (530) 752-0175
Email: software@asmail.ucdavis

[Web address: http://animalscience.ucdavis.edu/extension/software/pegasus/](http://animalscience.ucdavis.edu/extension/software/pegasus/)

How to Install?

1. Insert the Pegasus CD into the CD-Rom drive.
2. Using your Windows Explorer, navigate to the CD and you will see a file called Setup.exe:



Setup.exe

3. Double click Setup.exe. The Welcome dialog box appears:



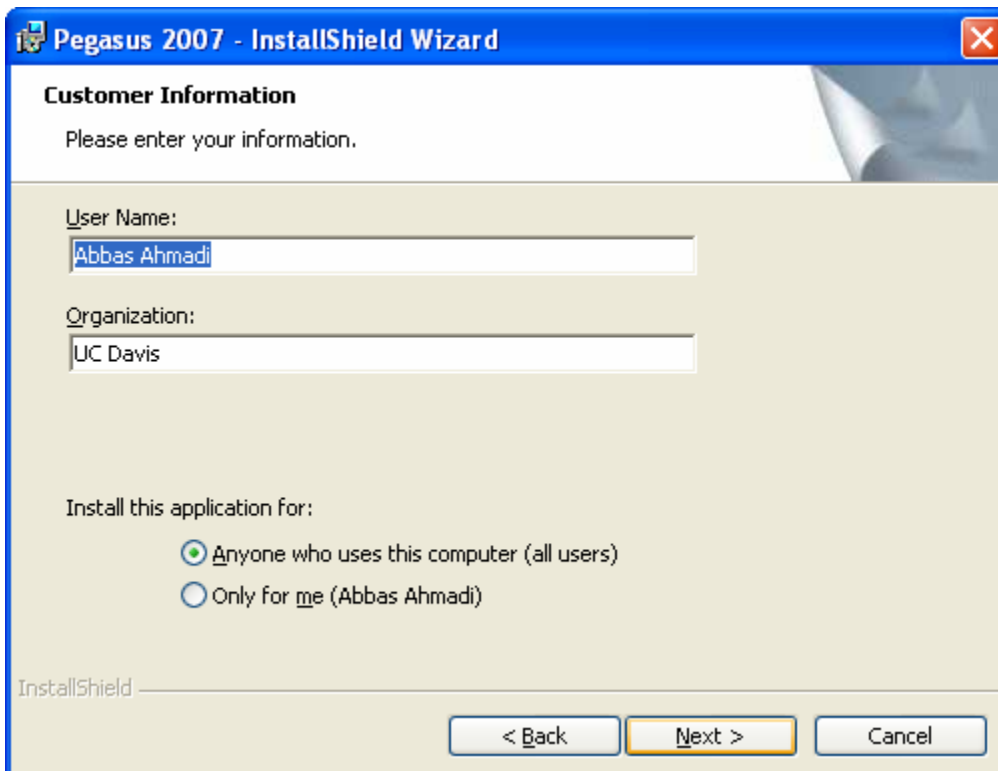
Click the Next button.

4. The License Agreement dialog box appears:



Accept the terms in the license agreement and click the Next button.

5. The Customer Information dialog box appears:



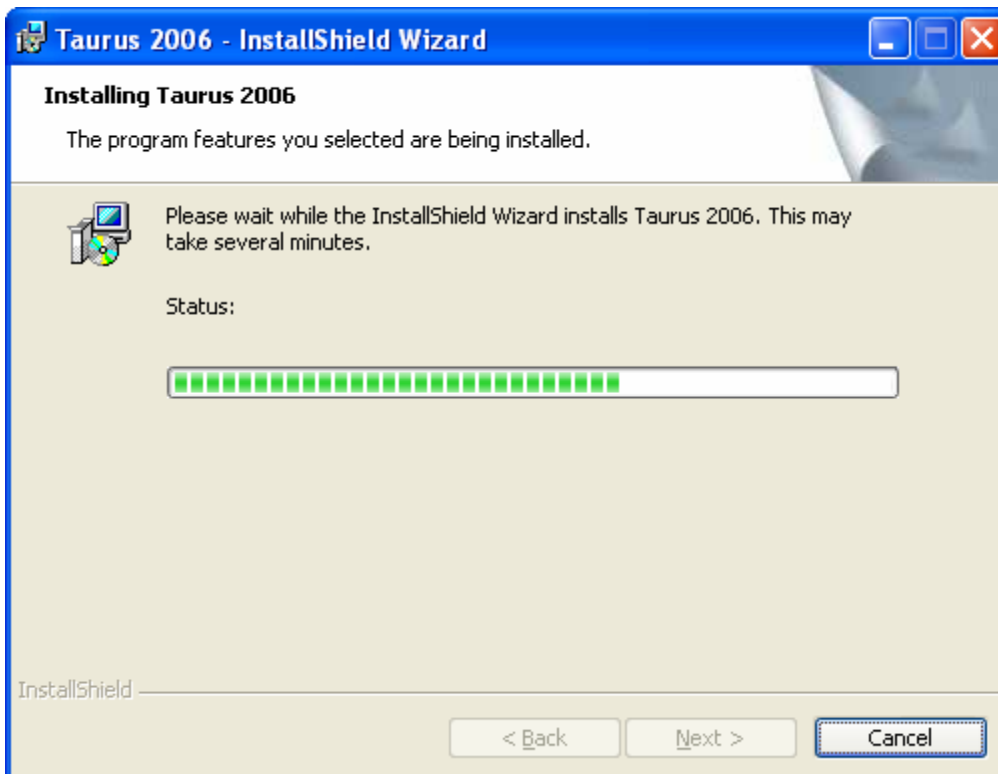
Enter your name and your organization and click the Next button.

6. The "Ready to Install the Program" dialog box appears:



Click the Install button.

7. The wizard will install the Pegasus program on your computer. It may take SEVERAL minutes:



8. Finally, the final dialog box appears:



Click the Finish button. The wizard finishes the installation and will place a shortcut to Pegasus on your desktop. It also adds the Pegasus to your program menu.

9. It will create a folder called "**C:\Program Files\UCDAVIS\PEGASUS2007**" and will place the **Pegasus.exe** file plus the **demo.peg** ration file in that folder

Pegasus folder

All Pegasus files are stored in the following folder:

C:\Program Files\UCDAVIS\PEGASUS2007

Ration Files

All Pegasus ration files have the .peg extension and are stored, by default, in the above folder.

Feed Library Files

There are four feed library files: (1) PEGFEEDS.DBF, standard feed library; (2) PEGALT.DBF, alternate feed library; (3) GRPHORSE.DBF, feed group library; (4) PEGINFEA.DBF, infeasible feed library. These files are stored in the **C:\Program Files\UCDAVIS\PEGASUS2007** folder.

Pegasus Manual

The Pegasus manual, Manual.pdf, is stored in the Pegasus folder. To view and print this file, you need Adobe Acrobat Reader. You can get a free copy of this software by visiting the following web site:

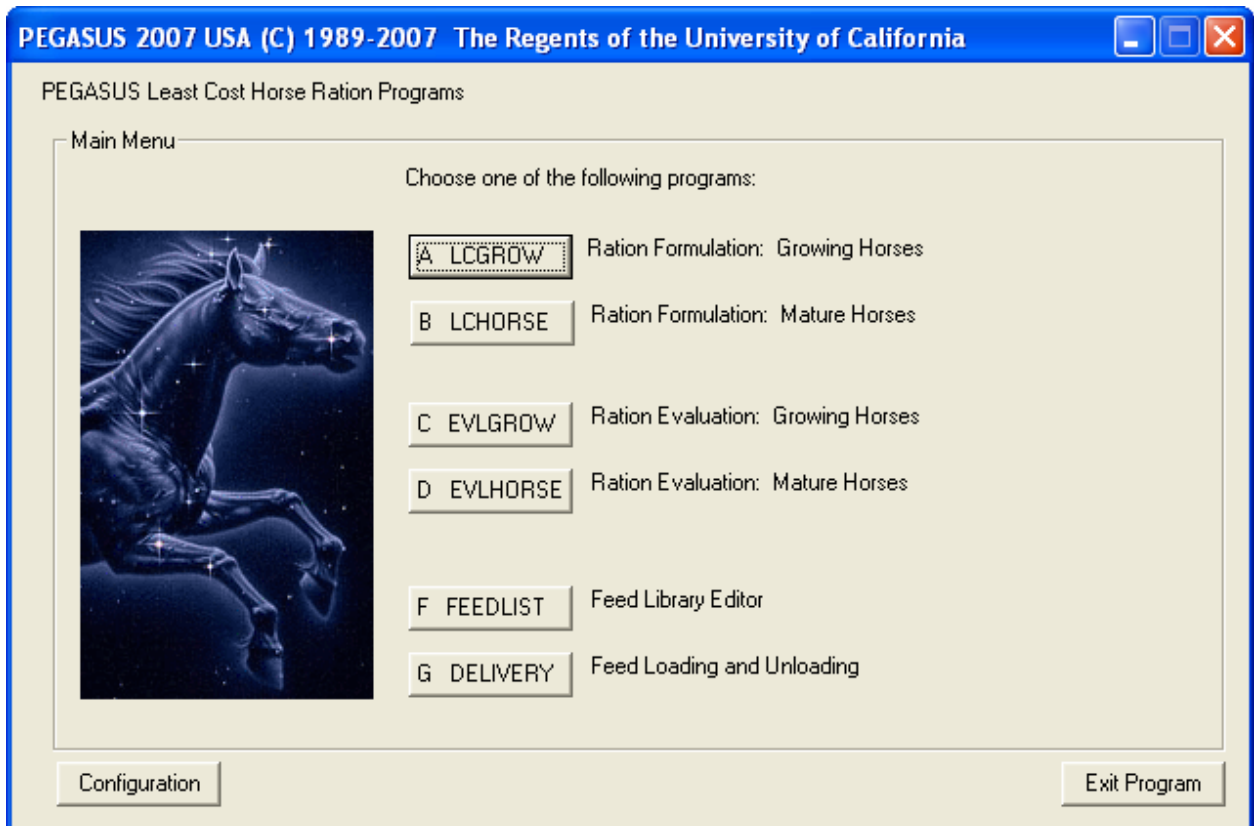
<http://www.adobe.com/products/acrobat/readstep2.html>

The Pegasus order form, OrderForm.pdf, is also in the same folder.

PEGASUS 2007: Readme

How to Run?

1. Click the Start button and then choose the "All Programs". A menu list appears.
2. Choose the "UCDAVIS" option. A sub-menu appears.
3. Choose the "PEGASUS2007" option. Another sub-menu appears. Choose the "Launch Pegasus.exe" option. The sign-on banner of Pegasus appears. Click the OK button. The main menu of Pegasus appears:



Choose the "A LCGROW: Ration Formulation: Growing Horses" option. The Animal Information dialog box appears:

4. Animal Information dialog box:

PEGASUS 2007 USA [LCGROW]

ANIMAL INFORMATION:

Title line 1: Date:

line 2: Wt Unit:

Body weight: lb

Expected mature body weight: lb

Average daily gain: lb

Age: months

In training? (Yes or No):

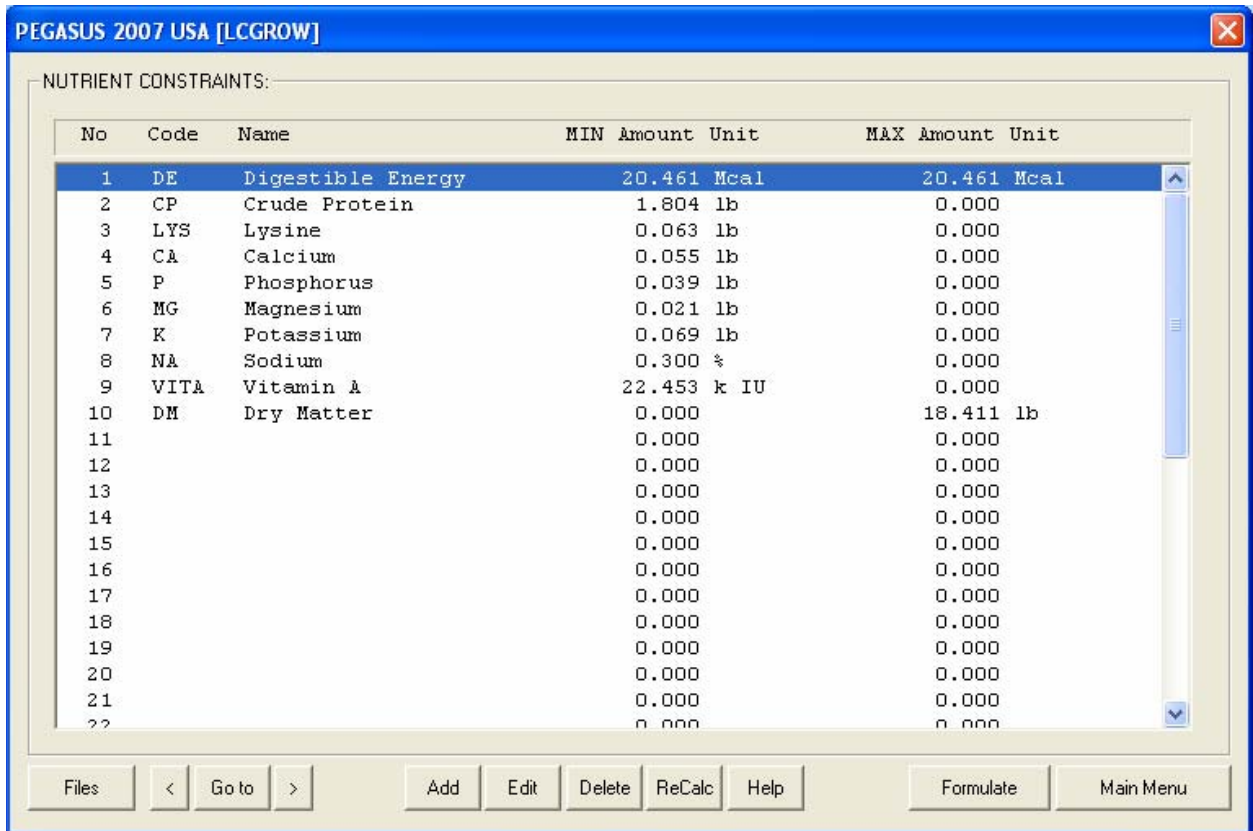
Digestible energy adjustment: %

Files < Go to > Help Formulate Main Menu

From the "Files" menu, choose the "Open" option. Navigate to C:\Program Files\UCDAVIS\PEGASUS2007\ folder. Open the Demo.peg ration file.

Click the [>] (Next Button). The Nutrient Constraints dialog box appears.

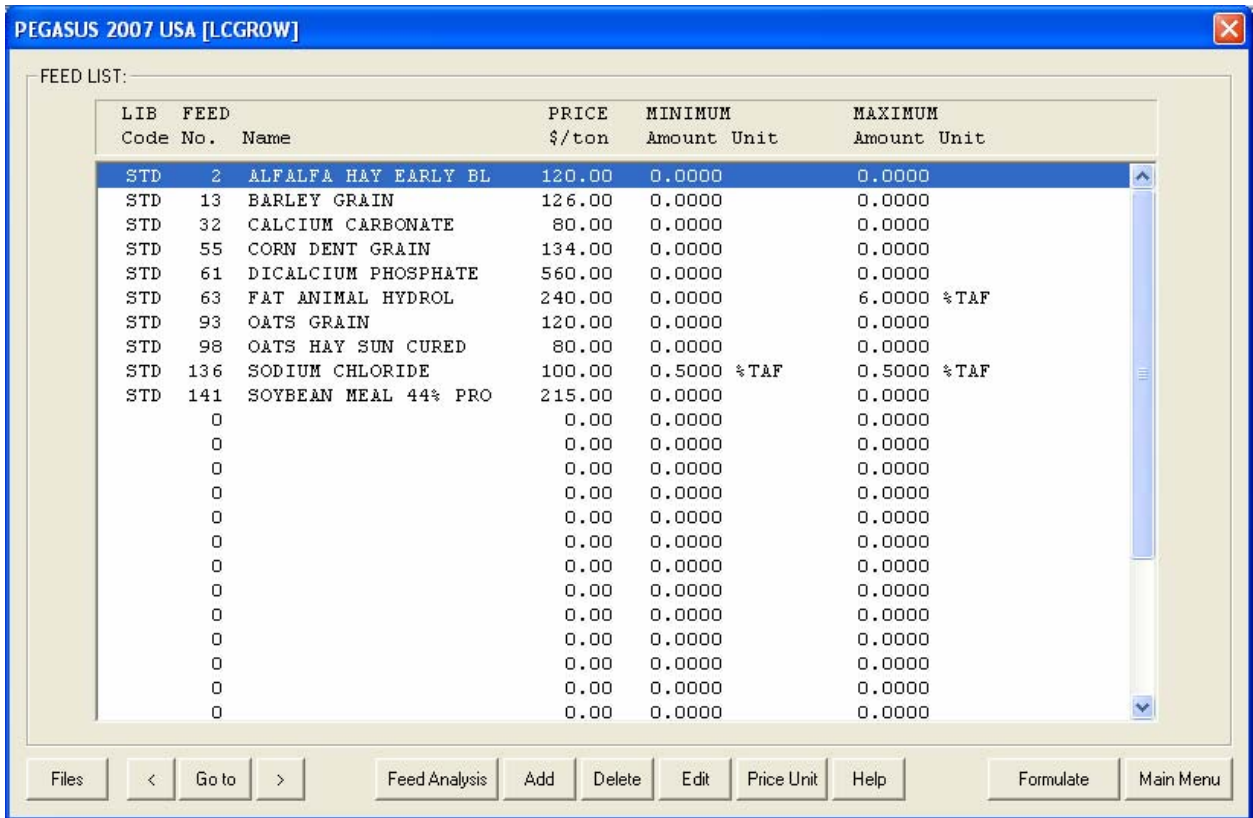
5. The Nutrient Constraints dialog box:



Here you can click the "ReCalc" button to populate this dialog box with a set of default constraints. You can add, delete or modify any or all of these constraints.

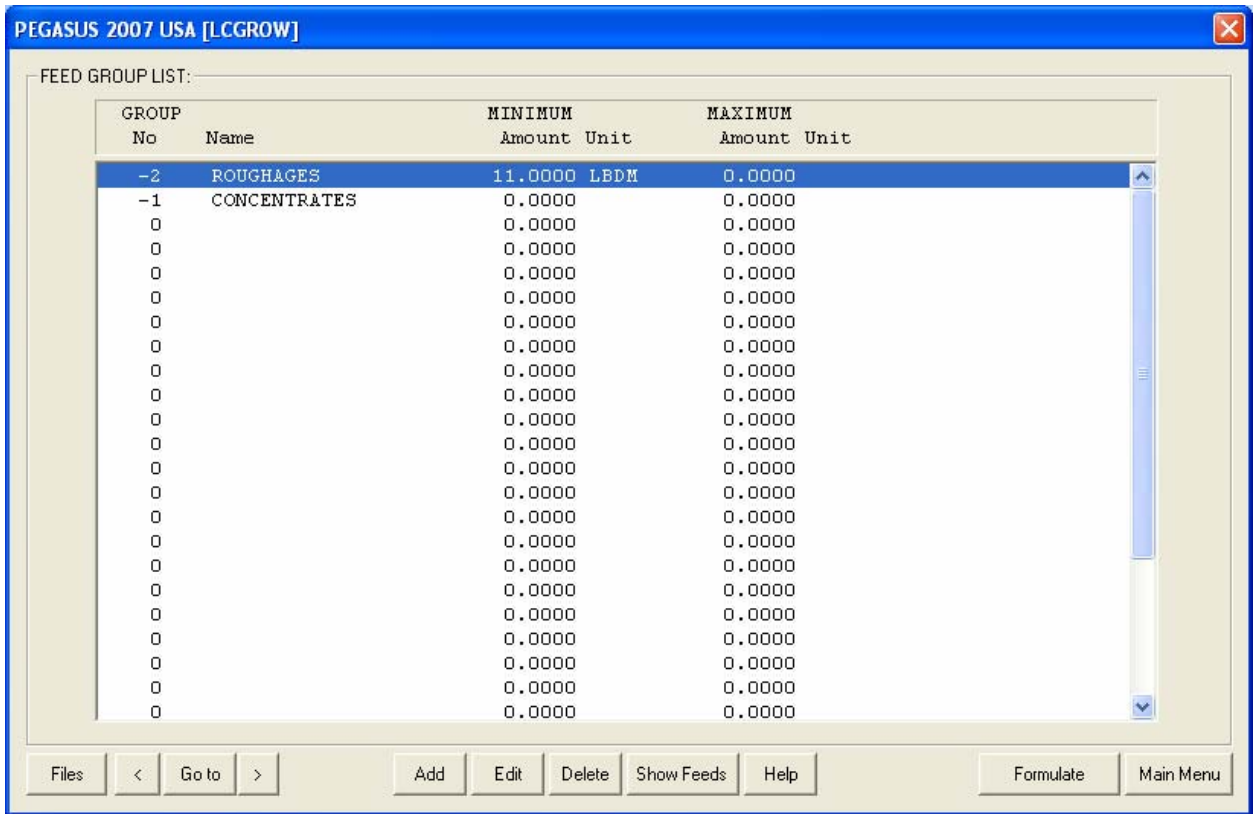
After you are done. Click the Next button. The Feed List Dialog box appears.

6. The Feed List dialog box:



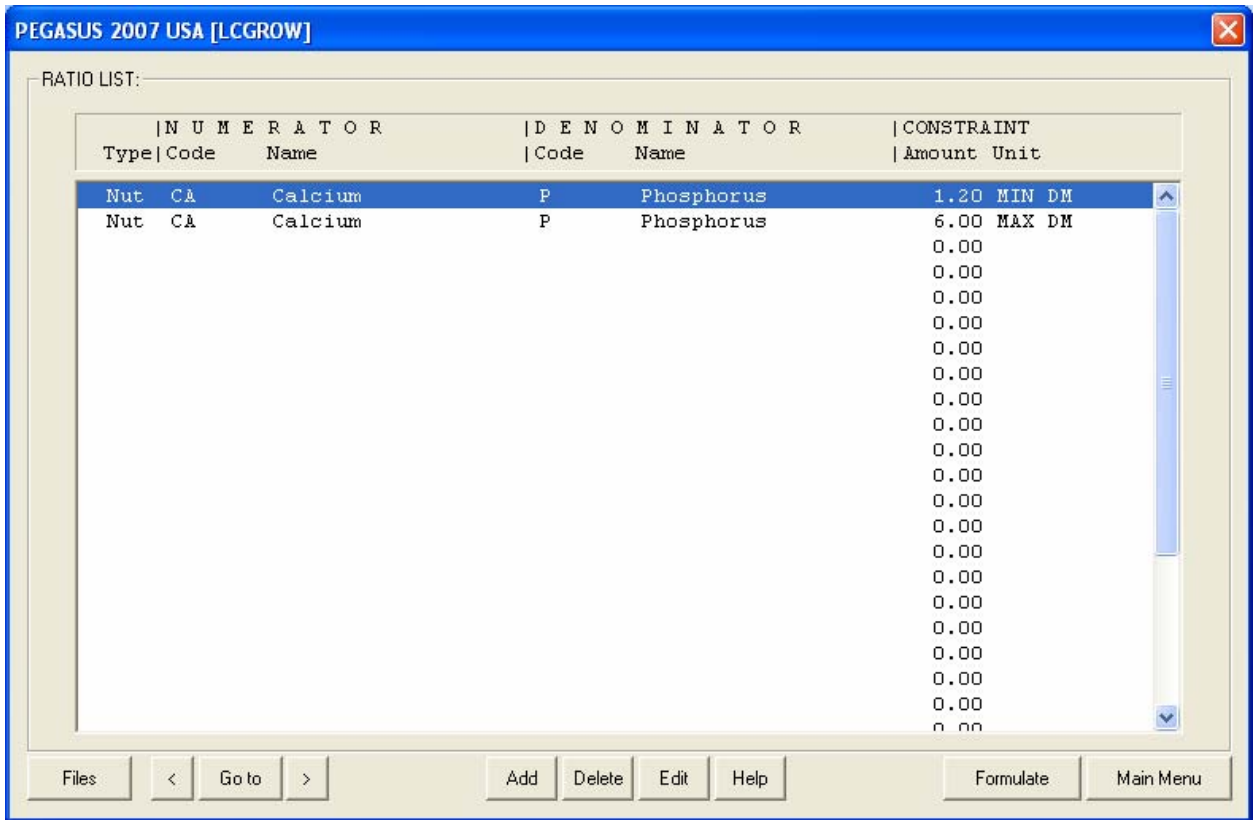
You can add, edit, or delete feeds. You can specify feed price and assign a min or max amount on a feed. You can also edit the nutrient analysis of a feed. These changes remain local to this ration file and will not reflect back to feed libraries. After you are done, click the Next button. The Group Constraints dialog box appears.

7. The Group Constraints dialog box:



you can specify a min or max for feed groups. When you are done, click the next button. The Ratio Constraints dialog box appears. .

8. The Ratio Constraints dialog box:



You can specify a min or max to the ratio of any two nutrients, or any two feeds, or any two feed groups.

When you are done click the Formulate button. The program will enter the formulation mode and will formulate the ration and will show the output dialog box.

9. The Output Screen

PEGASUS 2007 USA [LCGROW]

OUTPUT

California Horse Ranch
 One Shields Avenue, Davis, CA 95616
 Phone: (530) 752-1278 FAX: (530) 752-0175 http://animalscience.ucdavis.edu

R A T I O N C O M P O S I T I O N
 ALL FEEDS

ALL FEEDS in the ration	AS FED BASIS:		DRY MATTER BASIS:		---Constraints---			
	lb/day	%	lb/day	%	As fed -lb/day-		100% DM -%Total-	
					min	max	min	max
OATS HAY SUN CURED	6.316	36.717	5.729	36.713				
ALFALFA HAY EARLY BL	5.824	33.858	5.271	33.780				
BARLEY GRAIN	3.941	22.907	3.491	22.374				
FAT ANIMAL HYDROL	1.032	6.000	1.024	6.562				6.6
SODIUM CHLORIDE	0.086	0.500	0.086	0.551			0.6	0.6
DICALCIUM PHOSPHATE	0.003	0.018	0.003	0.020				
Total Ration.....	17.203		15.604					
Cost, \$/day.....	0.98							
Cost, \$/ton.....	113.87		125.53					

Files < Goto > Combine DM Basis Feed Group Help Input Main Menu

By clicking the Next button you can view the following screens:
 Ration Composition
 Price Ranges / Feeds Not Used
 Nutrient Analysis Detailed information about feeds

You can also view the results for all feeds or for a specific feed group on 100% DM basis or on AS Fed basis.

You can also print the out put or go back to the input screens and modify some entries and re-formulate the ration.