

ARIES

Least Cost and Ration Analysis Programs
for Sheep
Version Number 2007
Regional Software Dissemination Site: USA

(C) 1996-2007 The Regents of The University of California
All Rights Reserved
James W. Oltjen, Ph.D., Animal Management Systems Specialist
John R. Dunbar, Livestock Nutrition Specialist
Abbas Ahmadi, Ph.D., Software Development
Department of Animal Science,
University of California
Davis, CA 95616 USA

The Regents of the University of California make no representation or warranties with respect to the contents hereof and specifically disclaim any implied warranties of merchantability or fitness for any particular purpose. Further, the Regents of the University of California reserve the right to revise this software and/or documentation and to make changes from time to time in the content hereof without obligation of the Regents of the University of California to notify any person of such revision or change.

Contact information:
Extension Software Support
Department of Animal Science
University of California
Davis, CA 95616, USA
Phone: (530) 752-1278
Fax: (530) 752-0175
Email: software@asmail.ucdavis.edu
Web address: <http://animalscience.ucdavis.edu/extension/software/aries/>

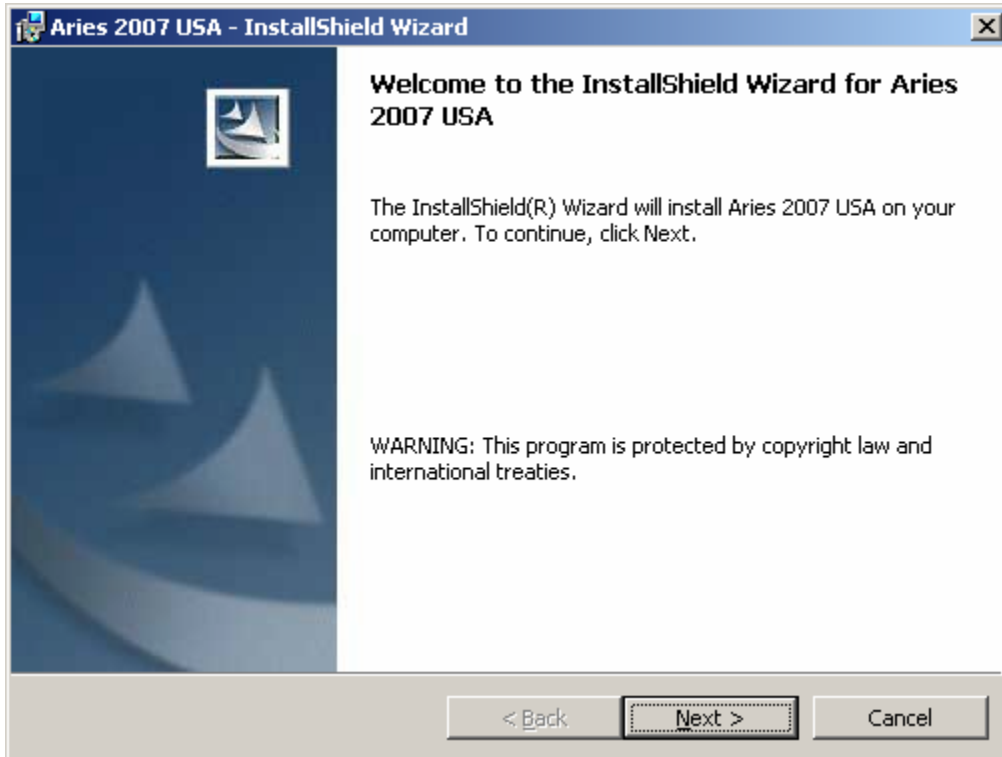
How to Install?

1. Insert the Aries CD into the CD-Rom drive.
2. Using your Windows Explore, navigate to the CD and you will see a file called Setup.exe:



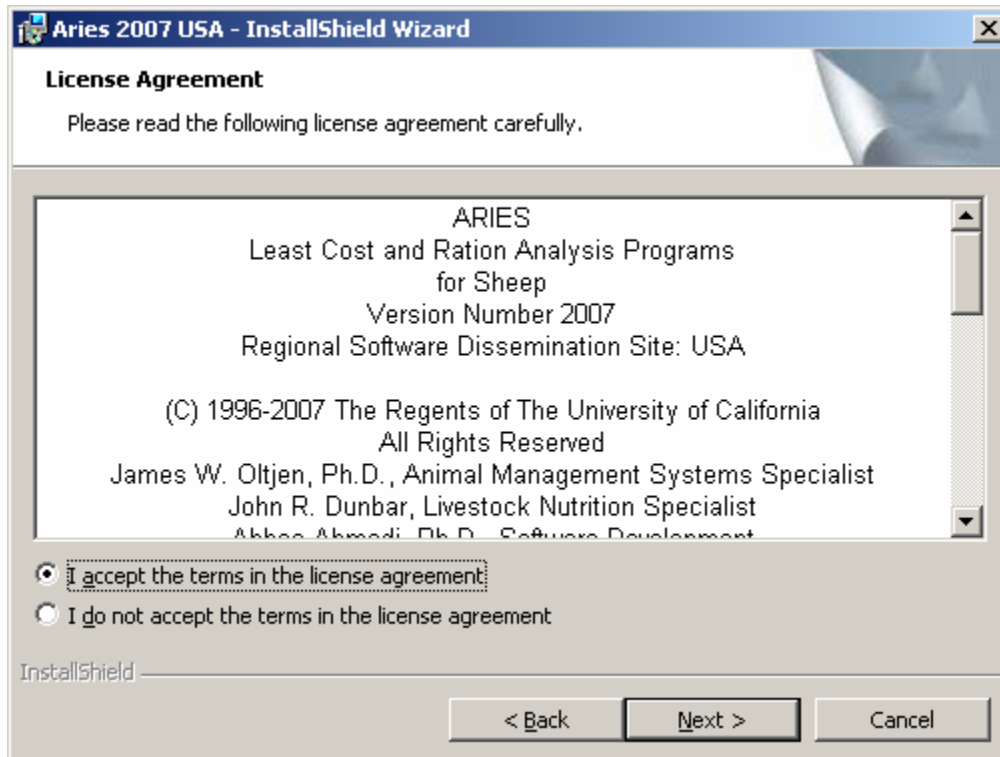
Setup.exe

3. Double click Setup.exe. The Welcome dialog box appears:



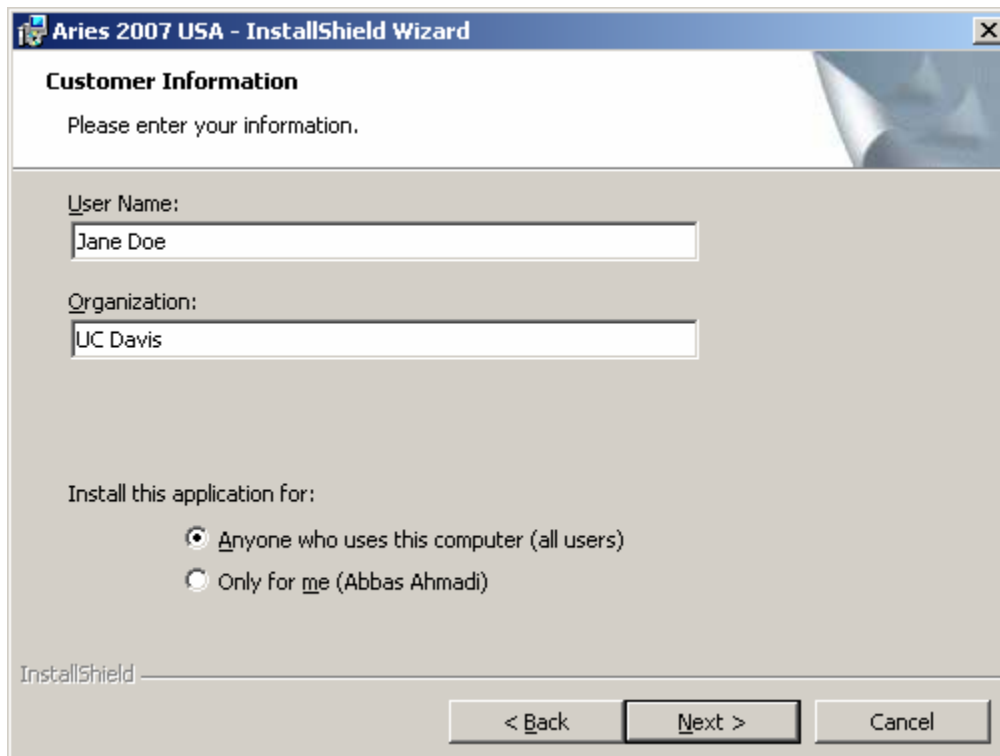
Click the Next button.

4. The License Agreement dialog box appears:



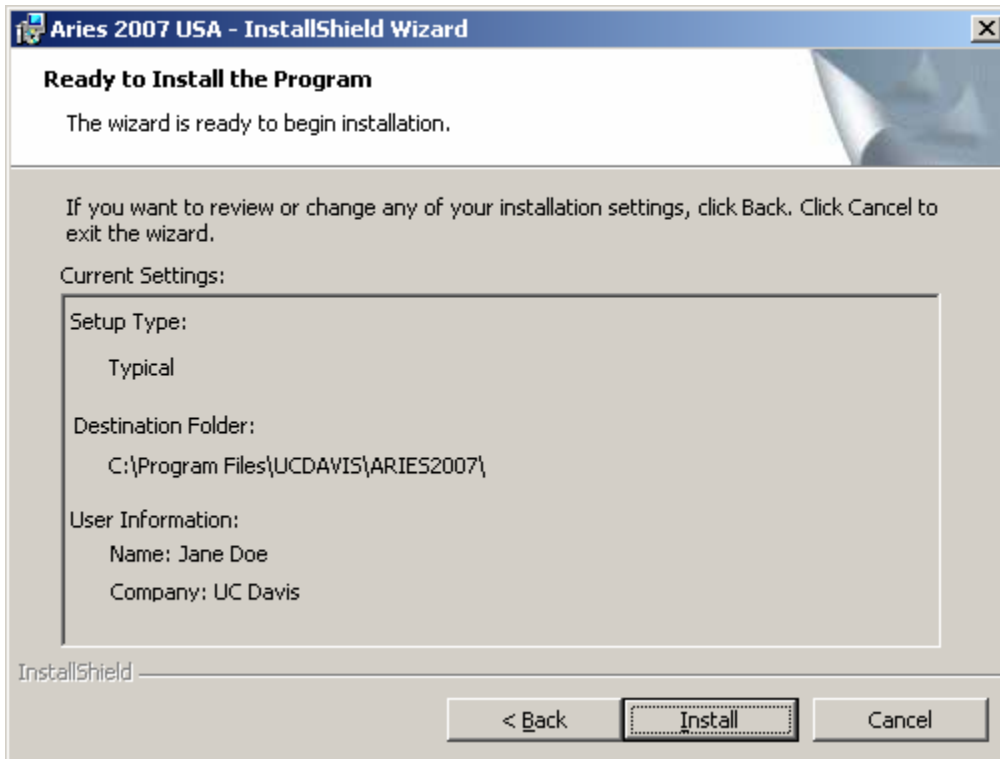
Accept the terms in the license agreement and click the Next button.

5. The Customer Information dialog box appears:



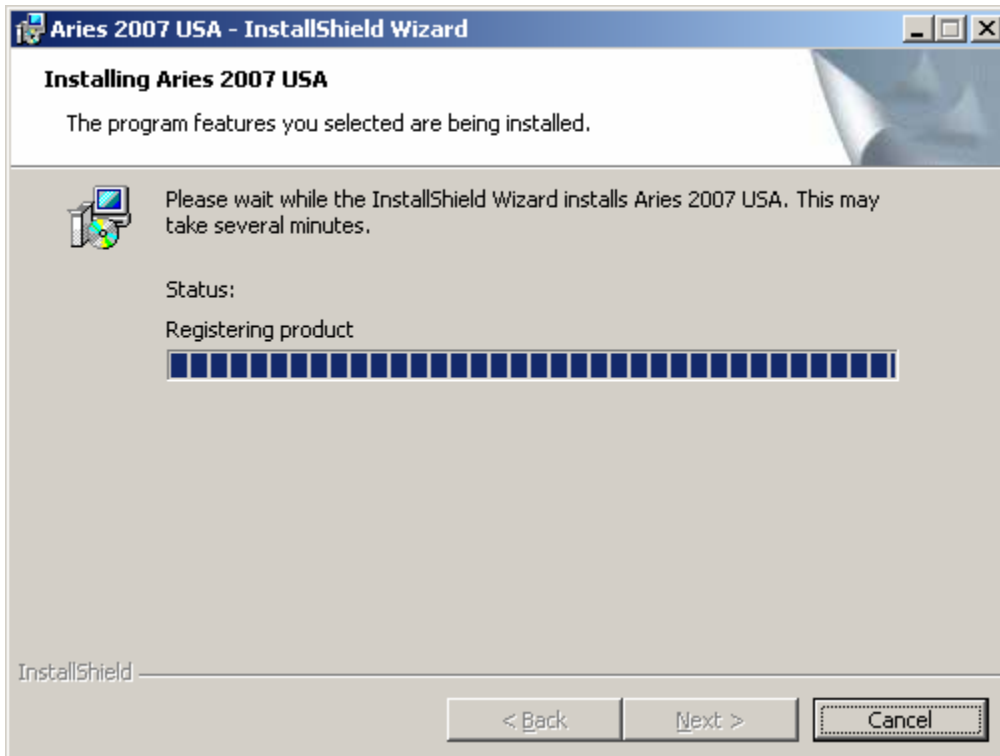
Enter your name and your organization and click the Next button.

6. The "Ready to Install the Program" dialog box appears:

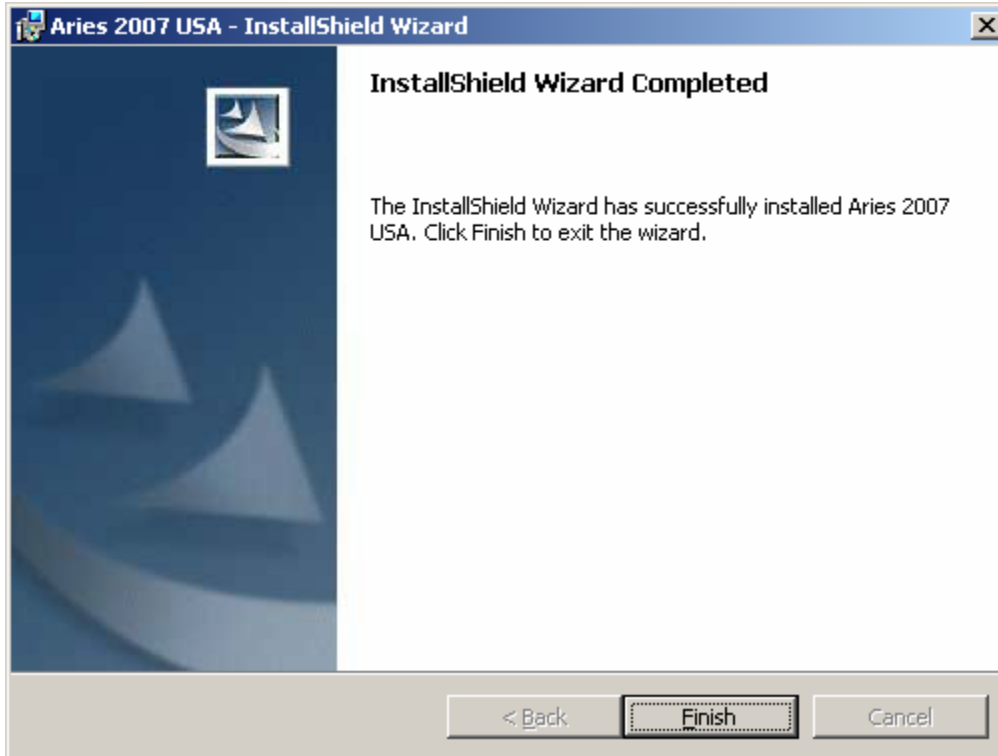


Click the Install button.

7. The wizard will install the Aries program on your computer. It may take SEVERAL minutes:



8. Finally, the final dialog box appears:



Click the Finish button. The wizard finishes the installation and will place a shortcut to Aries on your desktop. It also adds the Aries to your program menu.

9. It will create a folder called **"C:\Program Files\UCDAVIS\ARIES2007\"** and will place the **aries.exe** file plus the **demo.ari** ration file in that folder

Aries folder

All Aries files are stored in the following folder:

C:\Program Files\UCDAVIS\ARIES2007

Ration Files

All Aries ration files have the .ari extension and are stored, by default, in the above folder.

Feed Library Files

There are four feed library files: (1) ARISTD.DBF, standard feed library; (2) ARIALT.DBF, alternate feed library; (3) ARIGRP.DBF, feed group library; (4) ARIINF.DBF, infeasible feed library. These files are stored in the **C:\Program Files\UCDAVIS\ARIES2007** folder.

Aries Manual

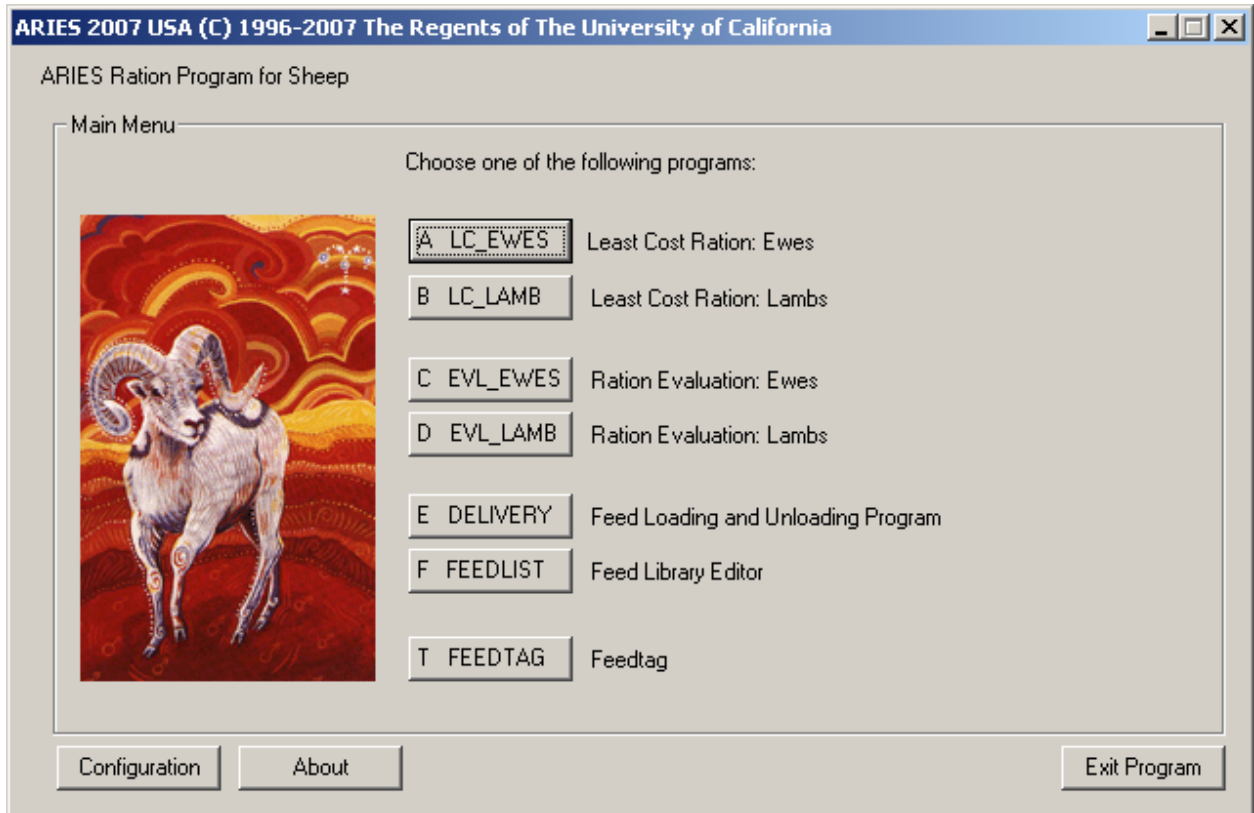
The Aries manual, Manual.pdf, is stored in the Aries folder. To view and print this file, you need Adobe Acrobat Reader. You can get a free copy of this software by visiting the following web site:

<http://www.adobe.com/products/acrobat/readstep2.html>

The Aries order form, OrderForm.pdf, is also in the same folder.

How to Run?

1. Click the Start button and then choose the "All Programs". A menu list appears.
2. Choose the "UCDAVIS" option. A sub-menu appears.
3. Choose the "ARIES2007" option. Another sub-menu appears. Choose the "Launch Aries 2007 USA" option. The sign-on banner of Aries appears. Click the OK button. The main menu of Aries appears:



Choose the "Least Cost Ration: Ewe" option. The Animal Information dialog box appears:

4. Animal Information dialog box:

ARIES 2007 USA [LC_EWES] DEMO.ARI

ANIMAL INFORMATION:

Title line 1: Date:

line 2: Wt Unit:

Ewe Category:

Ewe Body Weight: lb

Ewe Body Condition:

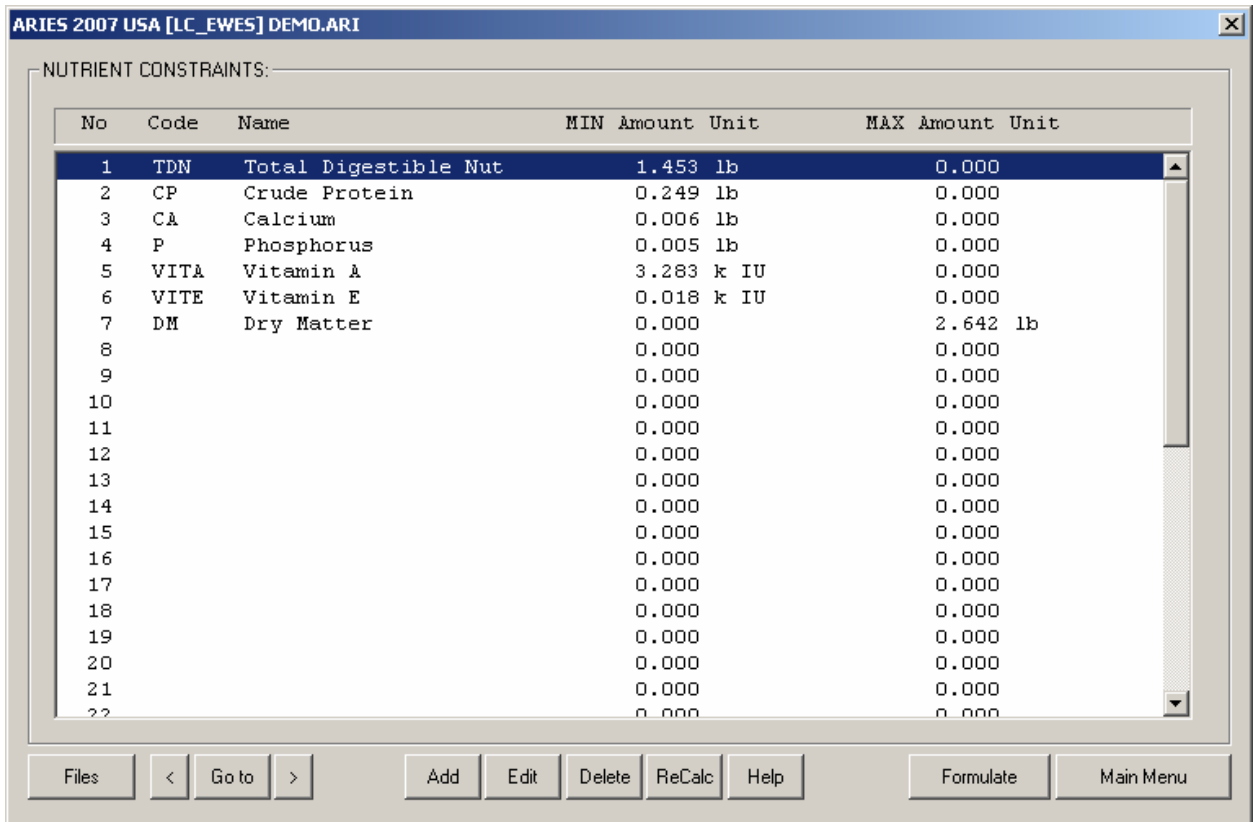
Ewe Formulation based on:

Files < Go to > Help Formulate Main Menu

From the "Files" menu, choose the "Open" option. Navigate to C:\Program Files\UCDAVIS\ARIES2007\ folder. Open the Demo.ari ration file.

Click the [>] (Next Button). The Nutrient Constraints dialog box appears.

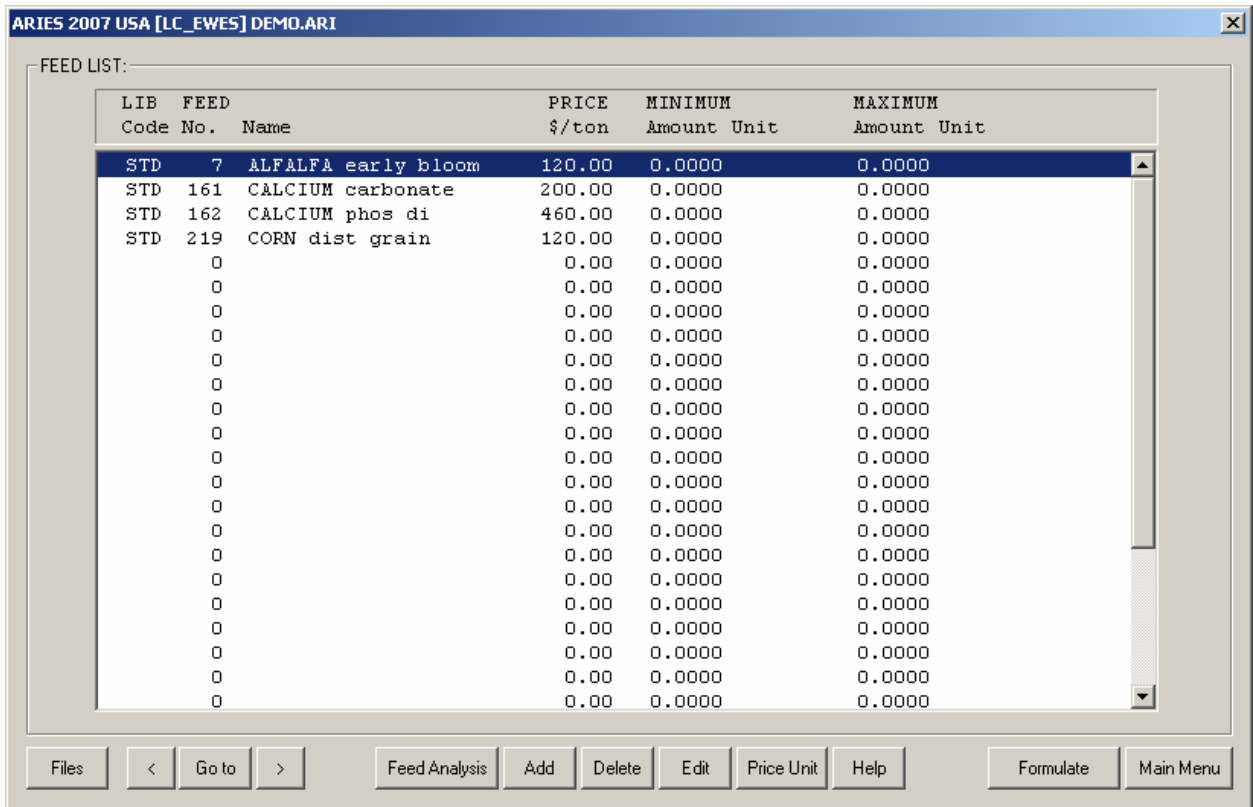
5. The Nutrient Constraints dialog box:



Here you can click the "ReCalc" button to populate this dialog box with a set of default constraints. You can add, delete or modify any or all of these constraints.

After you are done. Click the Next button. The Feed List Dialog box appears.

6. The Feed List dialog box:



You can add, edit, or delete feeds. You can specify feed price and assign a min or max amount on a feed. You can also edit the nutrient analysis of a feed. These changes remain local to this ration file and will not reflect back to feed libraries. After you are done, click the Next button. The Group Constraints dialog box appears.

7. The Group Constraints dialog box:

ARIES 2007 USA [LC_EWES] DEMO.ARI

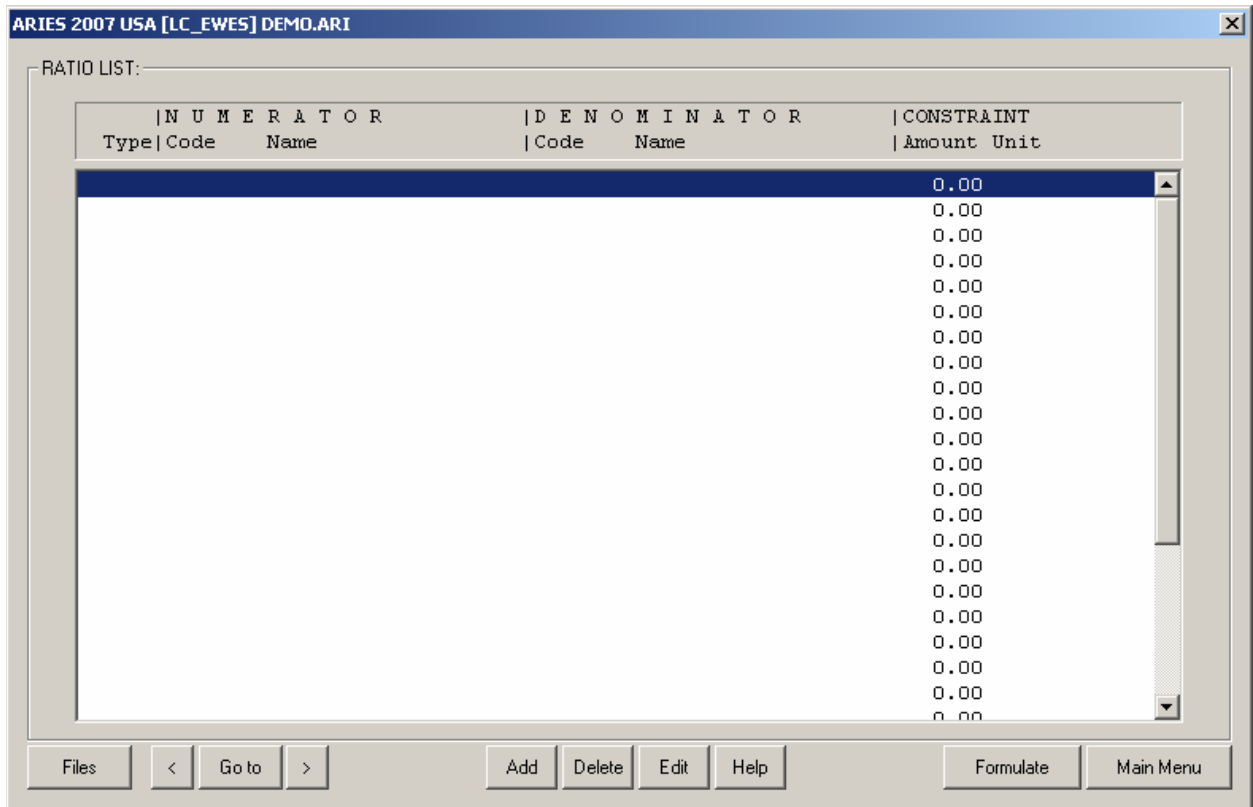
FEED GROUP LIST:

GROUP No	Name	MINIMUM Amount Unit	MAXIMUM Amount Unit
-2	ROUGHAGES	0.0000	0.0000
-1	CONCENTRATES	0.0000	0.0000
1	Dry forage, roughage	0.0000	0.0000
5	Protein supplements	0.0000	0.0000
6	Mineral supplement	0.0000	0.0000
10	By-products	0.0000	0.0000
13	Real Feeds	0.0000	0.0000
0		0.0000	0.0000
0		0.0000	0.0000
0		0.0000	0.0000
0		0.0000	0.0000
0		0.0000	0.0000
0		0.0000	0.0000
0		0.0000	0.0000
0		0.0000	0.0000
0		0.0000	0.0000
0		0.0000	0.0000
0		0.0000	0.0000
0		0.0000	0.0000
0		0.0000	0.0000
0		0.0000	0.0000
0		0.0000	0.0000
0		0.0000	0.0000
0		0.0000	0.0000
0		0.0000	0.0000
0		0.0000	0.0000
0		0.0000	0.0000
0		0.0000	0.0000
0		0.0000	0.0000

Buttons: Files < Go to > Add Edit Delete Show Feeds Help Formulate Main Menu

you can specify a min or max for feed groups. When you are done, click the next button. The Ratio Constraints dialog box appears. .

8. The Ratio Constraints dialog box:



You can specify a min or max to the ratio of any two nutrients, or any two feeds, or any two feed groups.

When you are done click the Formulate button. The program will enter the formulation mode and will formulate the ration and will show the output dialog box.

9. The Output Screen

California Sheep Ranch
 One Shields Avenue, Davis, CA 95616
 Phone: (530) 752-1278 FAX: (530) 752-0175 http://animalscience.ucdavis.edu

R A T I O N C O M P O S I T I O N							
ALL FEEDS							
ALL FEEDS in the ration	AS FED BASIS:		DRY MATTER BASIS:		---Constraints---		
	lb/day	%	lb/day	%	As fed -lb/day-		100% DM -%Total-
					min	max	min max
CORN dist grain	1.723	93.629	1.620	93.852			
ALFALFA early bloom	0.111	6.053	0.100	5.809			
CALCIUM carbonate	0.006	0.318	0.006	0.340			
Total Ration.....	1.841		1.726				
Cost, \$/day.....	0.11						
Cost, \$/ton.....	120.25		128.23				

By clicking the Next button you can view the following screens:

- Ration Composition
- Price Ranges / Feeds Not Used
- Nutrient Analysis
- Detailed information about feeds

You can also view the results for all feeds or for a specific feed group on 100% DM basis or on AS Fed basis.

You can also print the out put or go back to the input screens and modify some entries and re-formulate the ration.