

# **CAPRICORN**

**Least Cost and Ration Analysis Programs  
for Dairy and Meat Goats  
Version Number 2010  
Regional Software Dissemination Site: USA**

(C) 2010 The Regents of The University of California  
All Rights Reserved  
Peter H. Robinson, Ph. D., Dairy Nutrition and Management Specialist  
Abbas Ahmadi, Ph.D., Software Development  
Department of Animal Science,  
University of California  
Davis, CA 95616 USA

The Regents of the University of California make no representation or warranties with respect to the contents hereof and specifically disclaim any implied warranties of merchantability or fitness for any particular purpose. Further, the Regents of the University of California reserve the right to revise this software and/or documentation and to make changes from time to time in the content hereof without obligation of the Regents of the University of California to notify any person of such revision or change.

Contact information:  
Extension Software Support  
Department of Animal Science  
University of California

1 Shields Ave, Davis, CA 95616 USA  
Phone: (530) 752-1278  
Fax: (530) 752- 0175

Email: [software@asmail.ucdavis.edu](mailto:software@asmail.ucdavis.edu)

Web address: <http://animalscience.ucdavis.edu/extension/software/capricorn/>

## **How to Install?**

1. Insert the CAPRICORN CD into the CD-Rom drive.
2. Using your Windows Explore, navigate to the CD and you will see a file called Setup.exe.
3. Double click Setup.exe. The Welcome dialog box appears. Click the Next button.
4. The License Agreement dialog box appears. Accept the terms in the license agreement and click the Next button.
5. The Customer Information dialog box appears. Enter your name and your organization and click the Next button.
6. The "Ready to Install the Program" dialog box appears. Click the Install button.
7. The wizard will install the CAPRICORN program on your computer. It may take SEVERAL minutes.
8. Finally, the final dialog box appears. Click the Finish button. The wizard finishes the installation and will place a shortcut to CAPRICORN on your desktop. It also adds the CAPRICORN to your program menu.
9. It will create a folder called "**C:\Program Files\UCDAVIS\CAPRICORN2010\**" and will place the **CAPRICORN.exe** file plus the **demo.cap** ration file in that folder

---

---

## **CAPRICORN folder**

All CAPRICORN files are stored in the following folder:

**C:\Program Files\UCDAVIS\CAPRICORN2010\**

### **Ration Files**

All CAPRICORN ration files have the .CAP extension and are stored, by default, in the above folder.

### **Feed Library Files**

There are four feed library files: (1) CAPSTD.DBF, standard feed library; (2) CAPALT.DBF, alternate feed library; (3) CAPGRP.DBF, feed group library; (4) CAPINF.DBF, infeasible feed library. These files are stored in the **C:\Program Files\UCDAVIS\CAPRICORN2010\** folder.

### **CAPRICORN Manual**

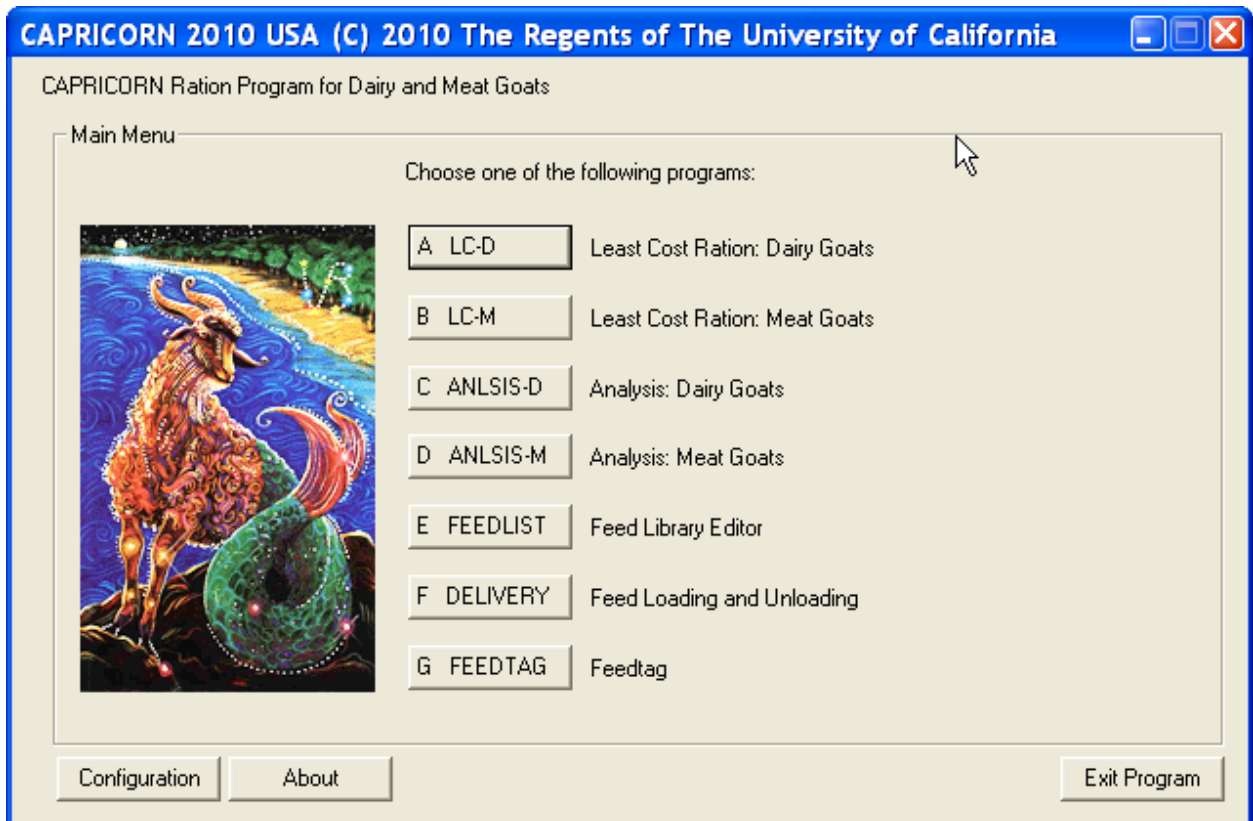
The CAPRICORN manual, Manual.pdf, is stored in the CAPRICORN folder. To view and print this file, you need Adobe Acrobat Reader. You can get a free copy of this software by visiting the following web site:

<http://www.adobe.com/products/acrobat/readstep2.html>

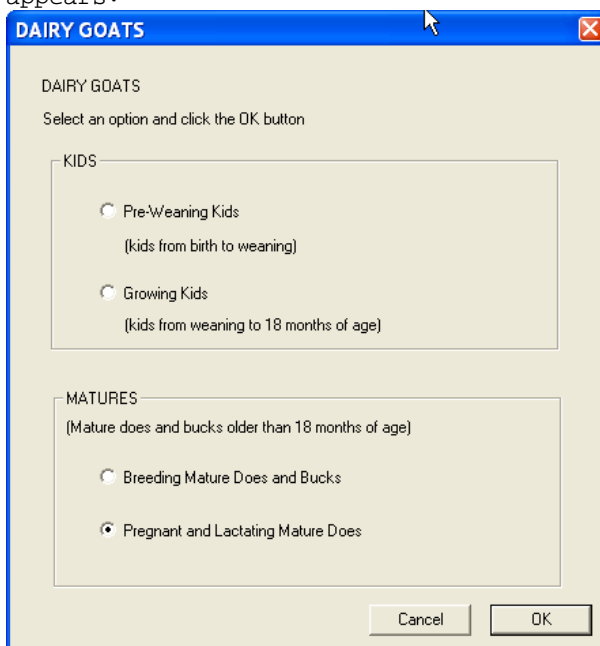
The CAPRICORN order form, OrderForm.pdf, is also in the same folder.

## How to Run?

1. Click the Start button and then choose the "All Programs". A menu list appears.
2. Choose the "UCDAVIS" option. A sub-menu appears.
3. Choose the "CAPRICORN2010" option. Another sub-menu appears. Choose the "Launch CAPRICORN" option. The sign-on banner of CAPRICORN appears. Click the OK button. The main menu of CAPRICORN appears:



Choose the "Least Cost Ration: Dairy Goats" option. The Dairy Goats dialog box appears:



4. Animal Information dialog box:

ANIMAL INFORMATION:

Title line 1:  Date:

line 2:  Wt Unit:

Mature Dairy Does

Body Weight:  lb

Average Daily Gain:  lb

Lactation

Days In Milk:  days

Parlor Milk Yield:  lb

Percent Fat:  (1 to 10)

Percent Protein:  (1 to 10)

Suckling Kids

Number of Suckling Kids:  kids

Body Weight Per Suckling Kid:  lb

Avg Daily Gain Per Suckling Kid:  lb

Sex Ratio of Suckling Kids (F/M):  (0 to 1)

Gestation

Days Pregnant:  days

Kid Birth Weight:  lb

Litter Size:  kids

Dietary Metabolizable Energy Concentration

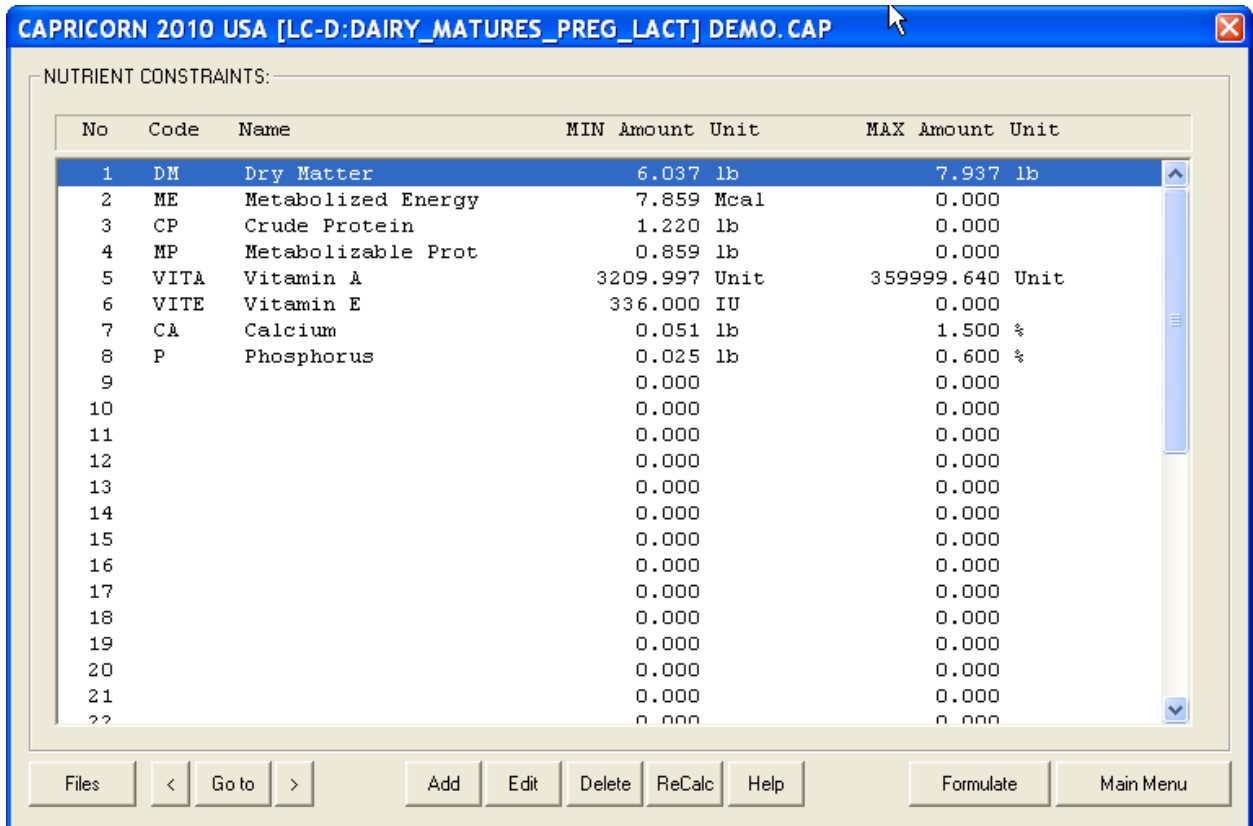
ME:

Files < Go to > Defaults Calculat Milk Suckled Help Formulate Main Menu

From the "Files" menu, choose the "Open" option. Navigate to C:\Program Files\UCDAVIS\CAPRICORN2010\ folder. Open the Demo.Cap ration file.

Click the [>] (Next Button). The Nutrient Constraints dialog box appears.

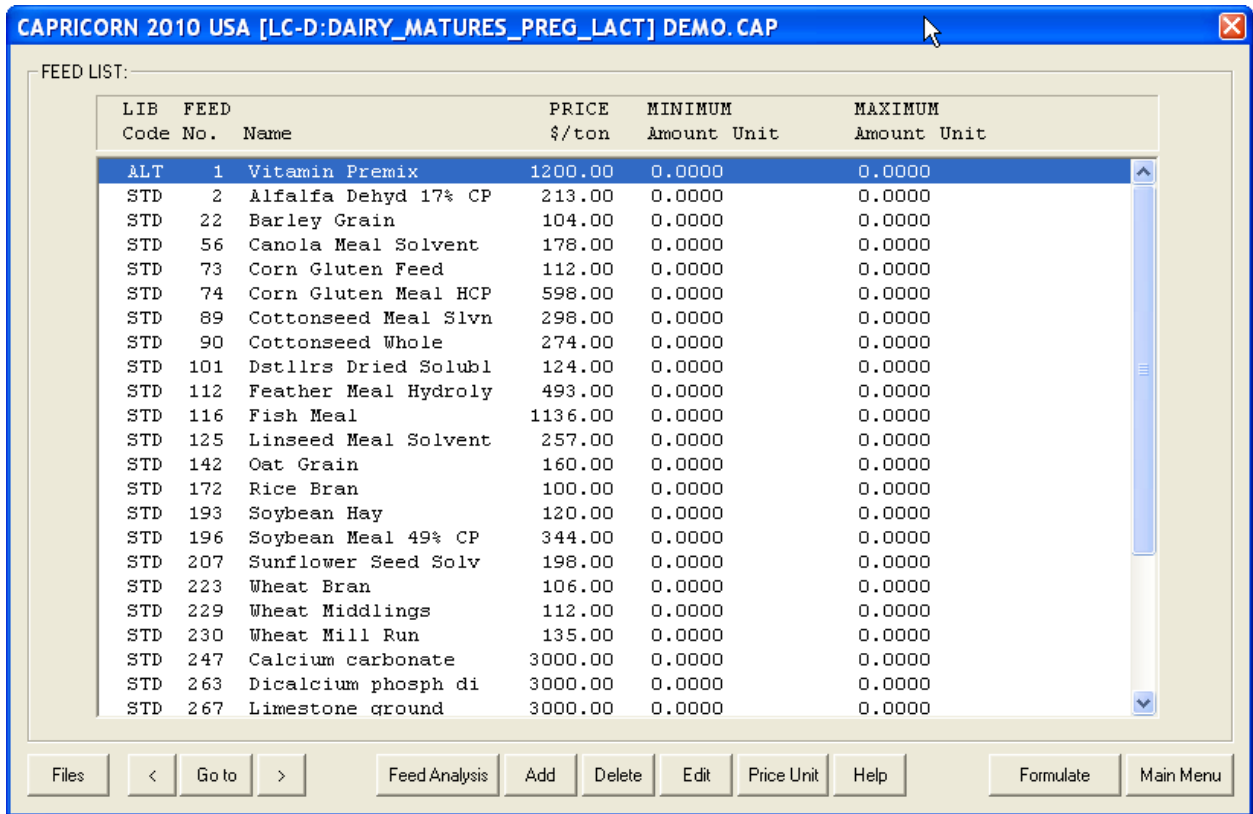
5. The Nutrient Constraints dialog box:



Here you can click the "ReCalc" button to populate this dialog box with a set of default constraints. You can add, delete or modify any or all of these constraints.

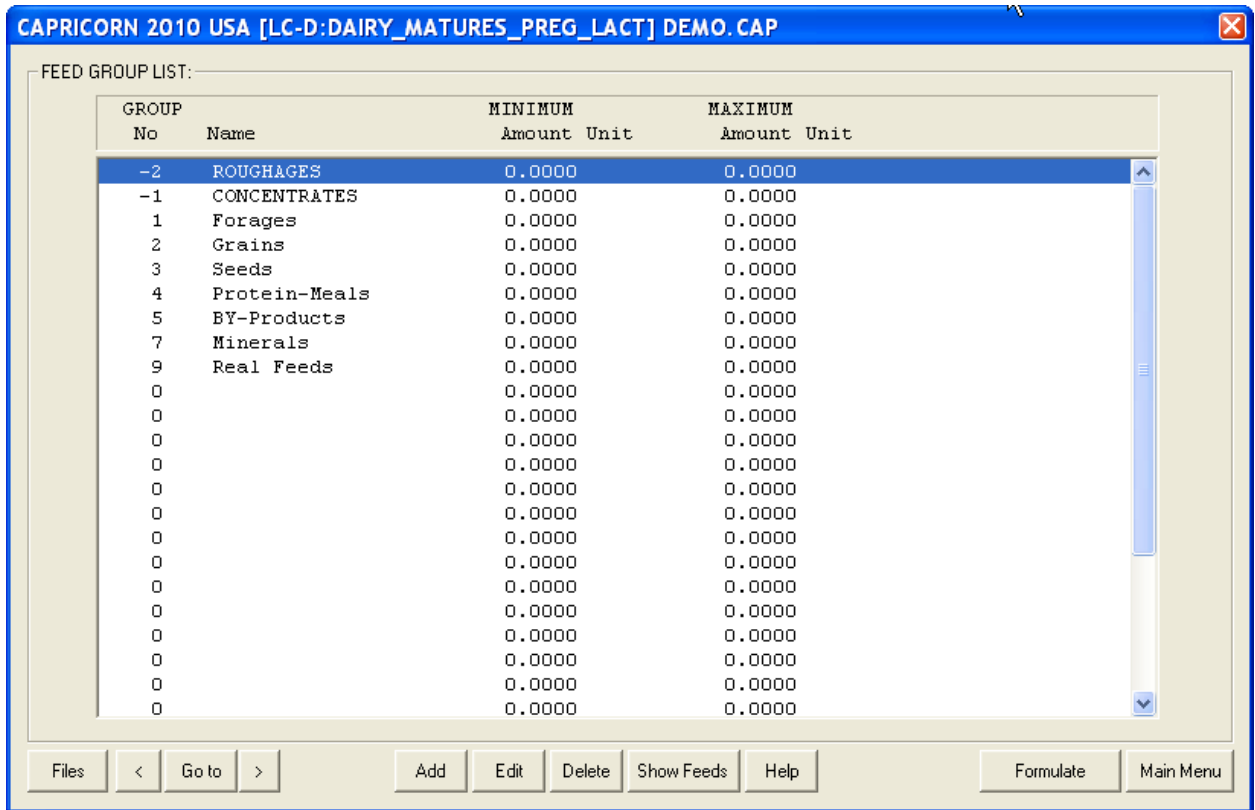
After you are done. Click the Next button. The Feed List Dialog box appears.

6. The Feed List dialog box:



You can add, edit, or delete feeds. You can specify feed price and assign a min or max amount on a feed. You can also edit the nutrient analysis of a feed. These changes remain local to this ration file and will not reflect back to feed libraries. After you are done, click the Next button. The Group Constraints dialog box appears.

7. The Group Constraints dialog box:



you can specify a min or max for feed groups. When you are done, click the next button. The Ratio Constraints dialog box appears. .





9. The Output Screen

**CAPRICORN 2010 USA [LC-D:DAIRY\_MATURES\_PREG\_LACT] DEMO.CAP**

OUTPUT

California Golden Goat Ranch  
 One Shields Avenue, Davis, CA 95616  
 Phone: (530) 752-1278 FAX: (530) 752-0175 http://animalscience.ucdavis.edu

**R A T I O N   C O M P O S I T I O N**  
**A L L   F E E D S**

ALL FEEDS in the ration	AS FED BASIS:		DRY MATTER BASIS:		---Constraints---			
	lb/day	%	lb/day	%	As fed		100% DM	
					-lb/day-	-%Total-	min	max
Alfalfa Dehyd 17% CP	6.317	78.108	5.812	78.669				
Barley Grain	1.241	15.347	1.105	14.954				
Wheat Bran	0.529	6.545	0.471	6.377				
Total Ration.....	8.088		7.388					
Cost, \$/day.....	0.77							
Cost, \$/ton.....	189.27		207.21					

Files   <   Go to   >   Combine   DM Basis   Feed Group   Help   Input   Main Menu

By clicking the "Go to" button you can view the following screens:

**OUTPUT: GO TO**

Choose an option and then click the OK button:

Go to: **Vitamin & Proximate Analysis of Feeds**

Cancel   OK

You can also view the results for all feeds or for a specific feed group on 100% DM basis or on AS Fed basis.

You can also print the out put or go back to the input screens and modify some entries and re-formulate the ration.

## Installation Notes

**Question:** I have installed the Windows version of the ration formulation program onto the lab computers logging as Administrator. When a student with no Admin privilege logs onto the computer, the feed libraries do not show any feeds and the user can not select any feed from these empty libraries.

**Answer:** Give the user **Full Control** of the ration folder

1. Log onto the computer as Administrator.
2. Run the Windows Explore and locate the folder containing the ration program:  
**C:\Program Files\UCDAVIS\CAPRICORN2010\**
3. Right click on this folder. A menu appears.
4. Select the "Properties" option from this menu. A dialog box appears.
5. Click the "Security" tab. Another dialog box appears.
6. Click the "Add" button. Another dialog box appears.
7. Type "Everyone" in the slot and click the OK button. You will be back to the previous dialog box.
8. Select the "Everyone" entry and give him the "Full Control" privilege.

