

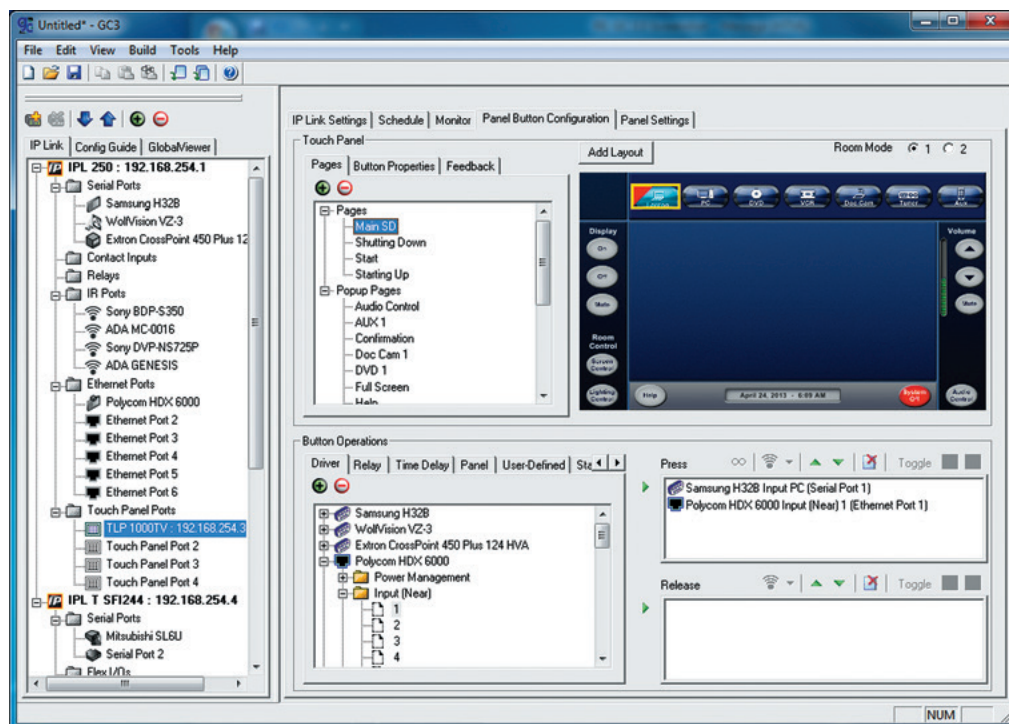
Global Configurator

CONFIGURATION SOFTWARE FOR
EXTRON CONFIGURABLE
CONTROL SYSTEMS

- ▶ No programming skills required
- ▶ Configures Extron IP-based control products, including TouchLink®, MediaLink®, and IP Link®
- ▶ Event reporting
- ▶ Scheduling and monitoring wizards

New Key Features in version 3.5

- ▶ Supports TouchLink for iPad
- ▶ Improved feedback, toggle states, and button action capabilities



Extron Electronics
INTERFACING, SWITCHING AND CONTROL

Introduction

Global Configurator is a simple-to-use, yet comprehensive software application that allows non-programmers to configure a wide range of Extron Ethernet-enabled control products. It provides an integrated environment for defining AV control system functionality from an easy-to-use graphical user interface. It's simple enough to use to configure a single room controller, yet powerful enough to facilitate building a Web-based resource management and remote monitoring system for hundreds of AV devices in multiple locations.

Intuitive, Easy-to-Use Configuration Tool

The intuitive, step-by-step menus walk the user through the process of configuring a device's functions. For large installations with IP-enabled systems, Global Configurator guides the user through adding devices to the system, organizing them in a logical fashion, configuring IP and security settings, and defining monitoring and alert parameters.

TouchLink-Based Control Systems

Global Configurator makes setting up TouchLink-based Control Systems quick and easy. First, add your control processor and TouchLink® touchpanel devices to your Global Configurator project. Next, import your GUI Configurator project from disk or download it directly from the TouchLink touchpanel. From the Panel Button Configuration tab in Global Configurator, you will be able to view each of your TouchLink pages and easily configure the button actions.

Ethernet Device Drivers

Support of Ethernet drivers expands the control capabilities of Extron IPL T S Series, IPL T CR48, IPL 250, and IPCP 505 control processors. Historically, RS-232 and IR have been used to control projectors, displays, and AV source devices. Now, Ethernet device drivers allow control of Ethernet-controllable devices over a network, preserving the other ports for devices without IP control. This capability allows the IPCP 505 to support up to eight Ethernet devices in addition to its hardware ports, and all other IP Link control processors to support up to six.

Adding New Equipment is Fast and Easy

Configuration changes may be required when a device is replaced or additional functionality is desired. With Global Configurator, modifying a configuration is fast and easy. The program creates and stores unique configuration files, which can be recalled whenever changes are required. Modifying a configuration is as simple as opening the configuration file, making the necessary changes, then uploading the new Web pages and device drivers. This feature is also useful for replicating systems with only a few mouse clicks.

Extensive Library of Extron Certified, Ready-to-Use Device Drivers

Extron has developed an extensive library of IR, serial, and Ethernet device drivers to ensure compatibility with Extron configurable control systems and third-party devices. Extron programmers regularly create and test drivers for additional devices and post them online. The complete Extron driver package, as well as individual driver files, can be downloaded from the Extron Web site. With the driver subscription feature in Global Configurator, it's easier than ever to ensure you always have the latest driver.

Enhanced Monitoring and Scheduling

Global Configurator allows users to configure all activity on any IP Link device port or on multiple ports. There is no need for multiple schedules to schedule an entire room full of tasks and responses to monitor triggers. For example, when a room is controlled and monitored by an MLC 226 IP MediaLink® Controller, Global Configurator will allow you to schedule a series of devices to turn on at a given time, with a user configurable time delay between startup tasks. It's also possible to set up a monitor that triggers multiple actions, such as sounding an alarm and simultaneously setting a switcher's front panel lockout mode, when a lectern door is opened during a preset time range.

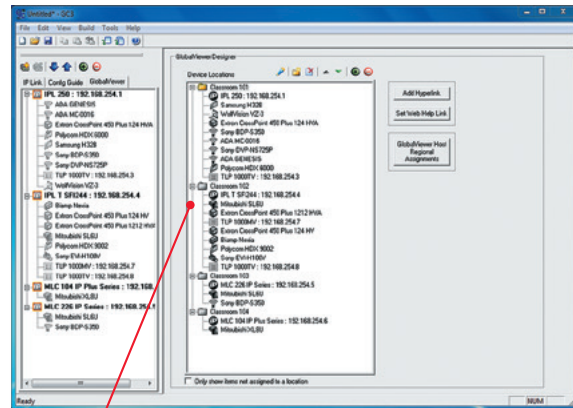
- ▶ **No programming skills required** – Step-by-step menus walk the user through the process of organizing system resources, building a network configuration, and uploading configuration files to the system.
- ▶ **TouchLink GUI integration** – Only a few steps are required to add a TouchLink touchpanel and upload the touchscreen layout project.
- ▶ **Configures Extron Ethernet-based control products including TouchLink, MediaLink, and IP Link**
- ▶ **Integrated IP Link device management capabilities** – Provides full management and control of IP Link devices within Global Configurator, including setting IP properties, passwords, mail server settings, etc.
- ▶ **GlobalViewer System Designer** – Drag-and-drop tool for organizing equipment in the Global View on up to eight levels, according to your specific needs.
- ▶ **Device driver subscription service** – Ensures that the latest driver available is included when the configuration file is uploaded.
- ▶ **Serial and Ethernet driver replacement maintains configuration settings when a driver is replaced** – Updating a serial driver does not require re-entering device configuration settings.
- ▶ **Extensive library of thousands of Extron certified, ready-to-use serial and IR drivers**

Intuitive User Interface

- ▶ **Supports Ethernet device drivers**
- ▶ **Checks for missing drivers** – When opening a project file, Global Configurator checks for any missing serial or IR drivers and provides the user with instructions for downloading them from the Extron Web site.
- ▶ **GlobalViewer Help button** – Provides a customizable URL link that appears on every GlobalViewer Web page for quick access to an e-mail form, contact info, or online user guide.
- ▶ **Project file import and export** – Import and export an entire configuration project for creation of a new configuration project or to merge into an existing file.
- ▶ **Supports up to four touchpanels**
- ▶ **Backlit button color support** – On-screen graphical representations of the buttons on a configured MediaLink controller in GlobalViewer will match the actual real-time color of the controller buttons.
- ▶ **Scheduling and monitoring wizards**
- ▶ **Multiple action scheduling** – Schedule multiple simultaneous actions at a specific day and time on a single IP Link device.
- ▶ **Event reporting** – E-mail messages can be used to track device status and usage data for creating reports and making purchase decisions.
- ▶ **New project wizard** – Saves time by allowing administrators to set default values for IP addresses, Telnet and Web ports, timeout values, passwords, and date/time settings that are applied to every device in the organization.
- ▶ **Intelligent upload manager** – Optimizes the upload process by compiling and uploading only the necessary changes.
- ▶ **Enhanced labeling options** – Provides extensive flexibility in renaming button labels in GlobalViewer Web pages.
- ▶ **Multiple optional graphical interface skins** – Global Configurator includes an assortment of colorful graphical user interfaces
- ▶ **Configuration guide for device setup** – Provides step-by-step instructions for device configuration.
- ▶ **Project AutoSave**

New Features for Version 3.5

- ▶ **Supports TouchLink for iPad**
- ▶ **Synchronize states of TouchLink for iPad and TouchLink touchpanels upon reconnection**
- ▶ **Button actions from multiple touchpanels can be accessed simultaneously**
- ▶ **Define the upper and lower bounds for a feedback gauge**
- ▶ **Directly set the Toggle State of a Button**



GlobalViewer System Designer

View how devices are organized by room, office, building, or facility location.

Add/Remove Devices

Quickly add new devices or remove old ones no longer being used.

Configuration Guide

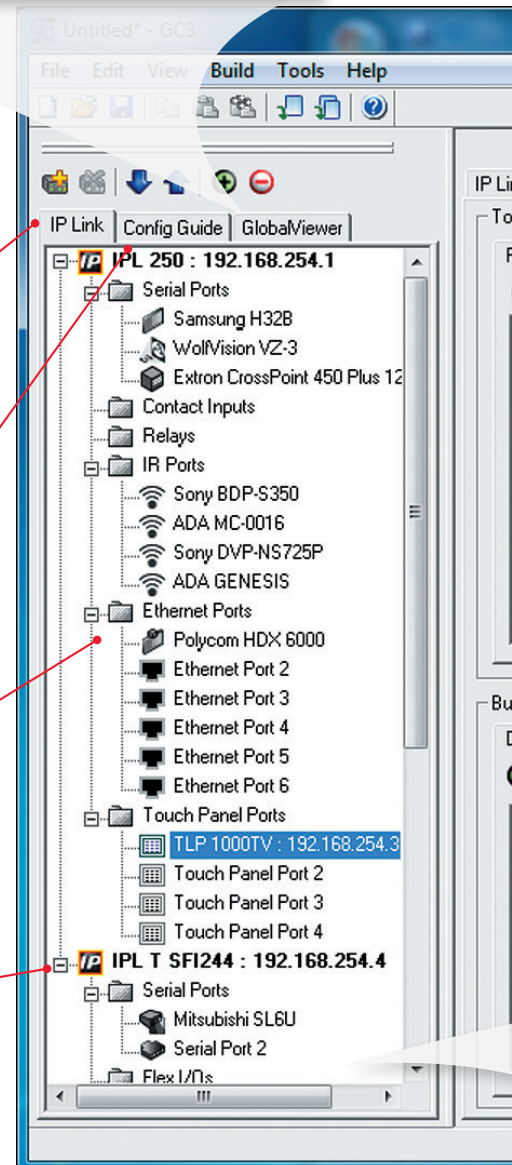
View each device port and function with configuration options and instructions.

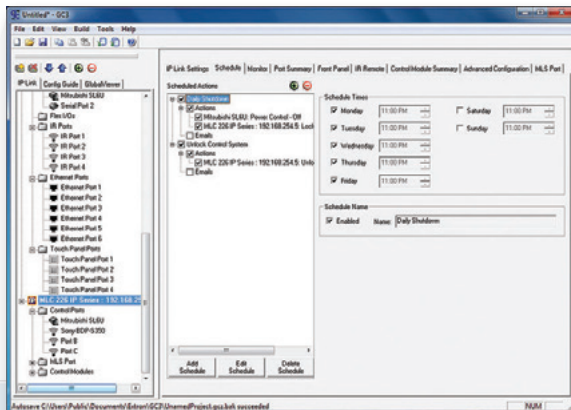
Ethernet Device Drivers

Allow for control of up to six Ethernet-enabled AV devices, such as displays, switches, and sources.

Intuitive Interface

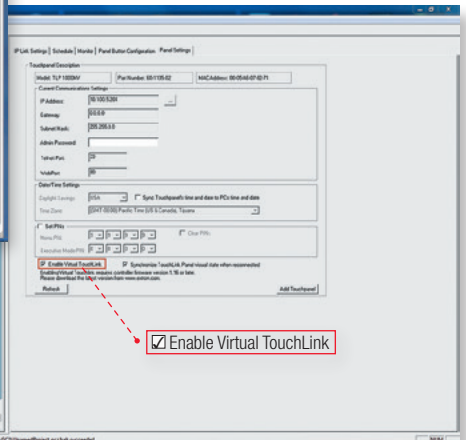
Unified software environment for configuring IP Link devices.



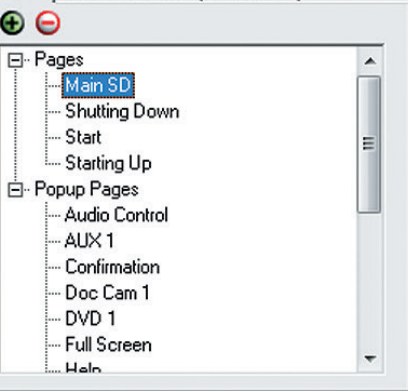


Monitoring & Scheduling

Enhanced wizards guide users through setup of event scheduling and monitor conditions.



Panel Settings | Schedule | Monitor | Panel Button Configuration | Panel Settings



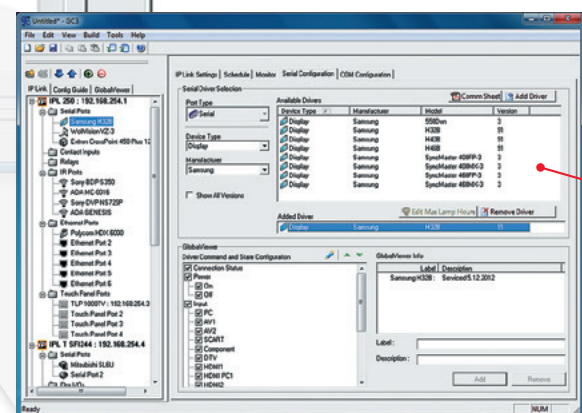
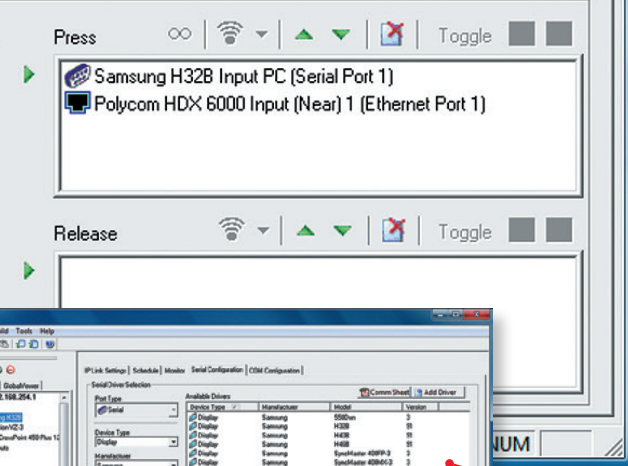
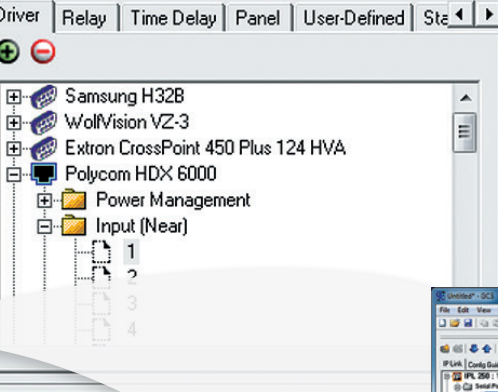
Enable TouchLink for iPad

Click the checkbox to enable Virtual TouchLink and turn your iPad into an additional point of control.

Virtual Graphical User Interface

Colorful device representations provide a virtual view for configuring every button action.

Monitor Operations



Thousands of Extron Certified Device Drivers

Easy to install and configure, rename and reorder functions, or remove unused functions.

Device Configuration

Simple and easy to configure; no programming knowledge required

One of the most costly aspects of building an AV asset management system, in terms of human resources and time, is programming. AV system programming is a complex task that requires the skills of an experienced programmer. Even organizations that can afford an in-house programming staff sometimes find themselves waiting for these key resources to become available.

Global Configurator puts all of the most commonly used system monitoring and control options at your fingertips, so there is no need to write software code. This configuration approach offers tremendous benefits over traditional system programming methods, particularly for those who have medium-to-large installations to connect, monitor, and maintain.

Nearly anyone can configure a system – Non-programmers can use the intuitive interface to build an extensive management and monitoring system, freeing up programmers for other projects.

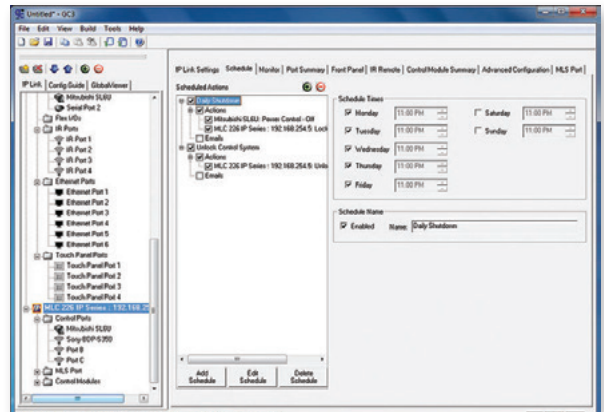
A common interface for all devices – With Global Configurator, configuring a port on one device works exactly like configuring the same kind of port on a different device, making the configuration process efficient and easy to learn.

Deploy large, widely-dispersed systems with ease – Global Configurator offers cut-and-paste functionality that allows for the rapid replication of “cookie cutter” systems across a large organization.

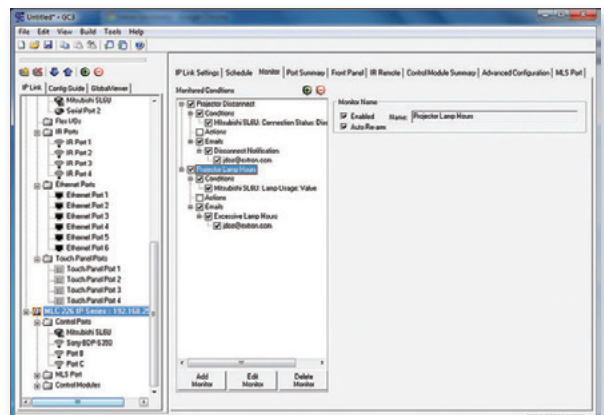
System changes take less time – Configuration means that initial system setup time is reduced and systems changes are not delayed while waiting for a hard-to-find programming resource.

System configurations are easy to understand – Users can see what the system is configured to do without having to decipher dozens of lines of computer code.

Administrator duties can be assigned to anyone – Responsibilities for management of the system do not have to reside with any particular technical group or discipline. They can be assigned wherever it makes the most business sense and are easy to transfer in the event of a change in personnel.



The Schedule Wizard guides users through the creation and naming of multiple schedules for automating actions on specific days and times.



The Monitor Wizard makes it easy to configure events and e-mail alerts that occur in response to a variety of user-definable conditions — no programming knowledge is required.

TouchLink for iPad

TouchLink for iPad is an easy-to-use AV control system app designed for the Apple iPad. TouchLink for iPad provides users with an additional point of control for rooms equipped with any TouchLink touchpanel. The app is compatible with projects created using Global Configurator 3.5. With this app, presenters can wirelessly control their AV system using a Wi-Fi network, allowing them the freedom to move around the room, or even between rooms. TouchLink for iPad is available for download in the Apple App Store.



Specifications

Minimum System Requirements

- Intel Pentium 4 or AMD Athlon processor
 - Microsoft® Windows XP SP3, Windows Vista®, Windows® 7, or Windows® 8
 - Microsoft Internet Explorer® 6.0 or higher
 - 512 MB of RAM
 - 100 MB of available hard disk space
- NOTE:** A network connection with a data transfer rate of 10 Mbps, 100 Mbps recommended

MINIMUM FIRMWARE REQUIREMENTS FOR COMPATIBILITY WITH GLOBAL CONFIGURATOR

- IPCP 505 control processor - version 1.01 or higher
- IPL 250 control processor - version 1.15 or higher
- IPL T Series control processors - version 1.15 or higher
- MLC 104 IP Plus controller - version 1.00 or higher
- MLC 226 IP controller - version 1.03 or higher
- System 5 IP switcher - version 2.00 or higher
- TLP 1000TV TouchLink Touchpanel - version 1.04 or higher
- TLP 1000MV TouchLink Touchpanel - version 1.04 or higher

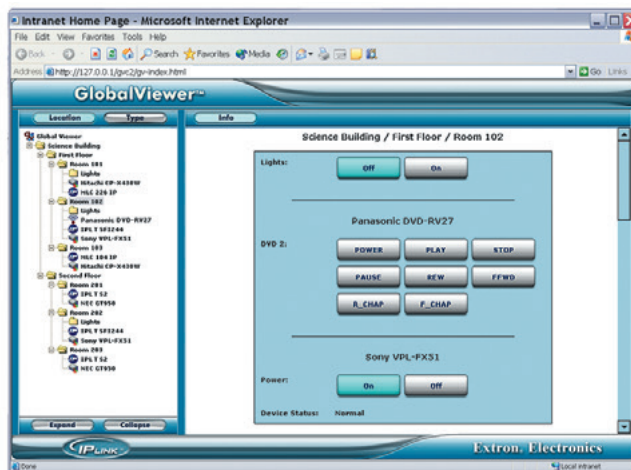
For a complete list of products and their minimum firmware requirements, please review the release notes for this software found on the Extron Web site.

INTEGRATED AV RESOURCE MANAGEMENT – CREATED BY GLOBAL CONFIGURATOR

Once the configuration process is complete, Extron TouchLink, MediaLink, and IP Link configurable control products integrate seamlessly with Extron's award-winning GlobalViewer Enterprise and Free GlobalViewer software for complete AV resource monitoring, management, and control over a computer network.



GlobalViewer® Enterprise 2.0



Free GlobalViewer

Worldwide Sales Offices

Anaheim • Raleigh • Silicon Valley • Dallas • New York • Washington, DC • Toronto • Mexico City • Paris • London • Frankfurt
Amersfoort • Moscow • Dubai • Johannesburg • New Delhi • Bangalore • Singapore • Seoul • Shanghai • Beijing • Tokyo

UNITED STATES

+800.633.9876
Inside USA/Canada
+1.714.491.1500

EUROPE

+800.3987.6673
Inside Europe
+31.33.453.4040

ASIA

+800.7339.8766
Inside Asia
+65.6383.4400

MIDDLE EAST

+971.4.299.1800